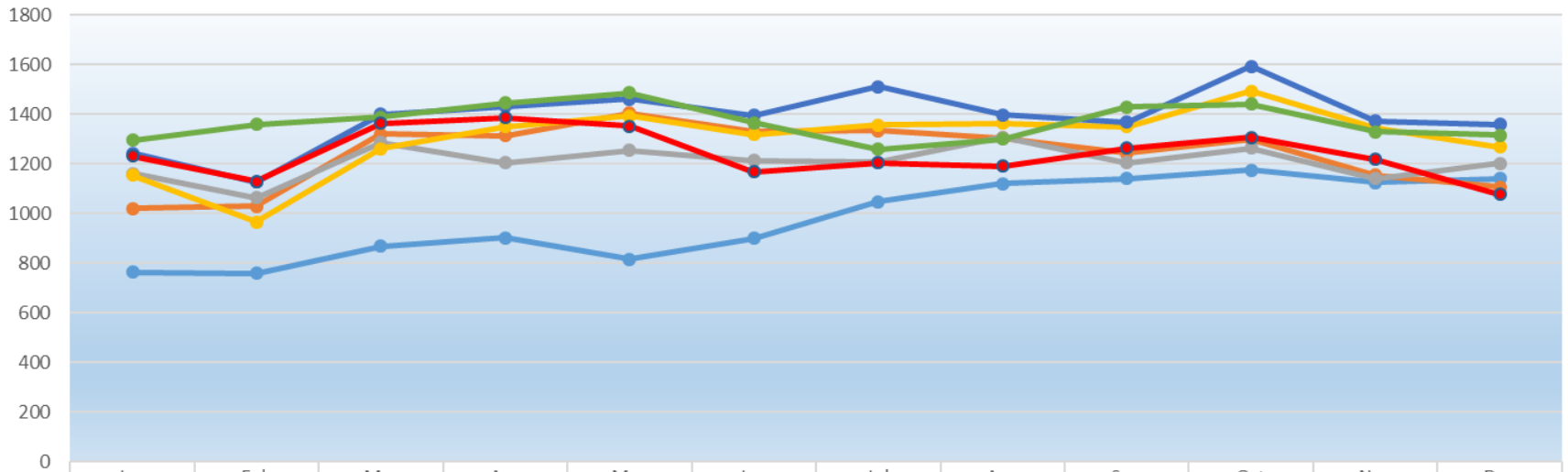


LERN Communication Center

2017 Patient Data

Annual Volume

LERN Communication Center Volume by Year



	Jan	Feb	Mar	Apr	May	Jun	Jul	Aug	Sep	Oct	Nov	Dec
● CY 2011	763	758	867	901	815	898	1046	1119	1139	1174	1124	1139
● CY 2012	1020	1029	1319	1313	1404	1329	1332	1303	1241	1297	1153	1106
● CY 2013	1161	1062	1285	1203	1253	1213	1205	1305	1204	1262	1139	1200
● CY 2014	1153	965	1261	1350	1392	1316	1355	1362	1349	1492	1341	1266
● CY 2015	1241	1125	1400	1431	1461	1394	1511	1396	1368	1593	1372	1359
● CY 2016	1294	1358	1387	1444	1486	1364	1257	1300	1428	1439	1329	1315
● CY 2017	1231	1128	1362	1385	1352	1166	1203	1189	1263	1306	1217	1075

2011 – 11,743

2012 – 14,836

2013 – 14,492

2014 – 15,602*

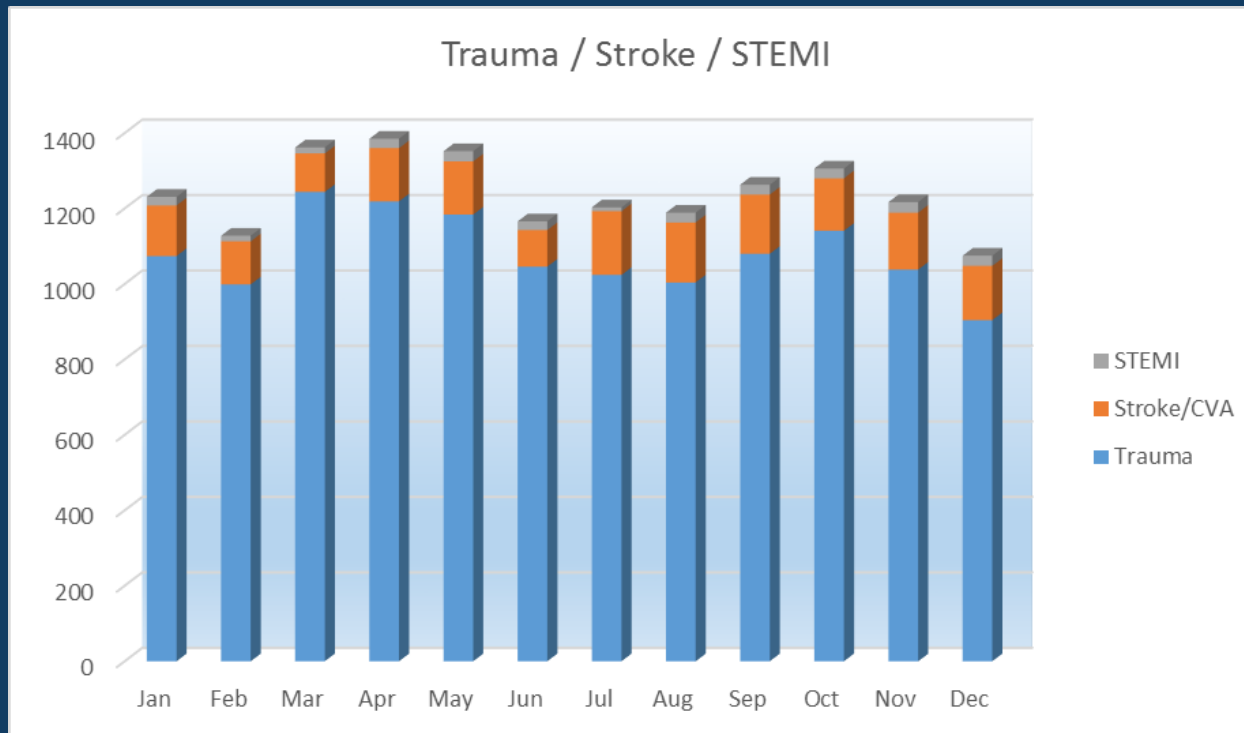
2015 – 16,651*

2016 – 16,401*

2017 – 14,877*

* 2014-2016 Includes Stroke and STEMI

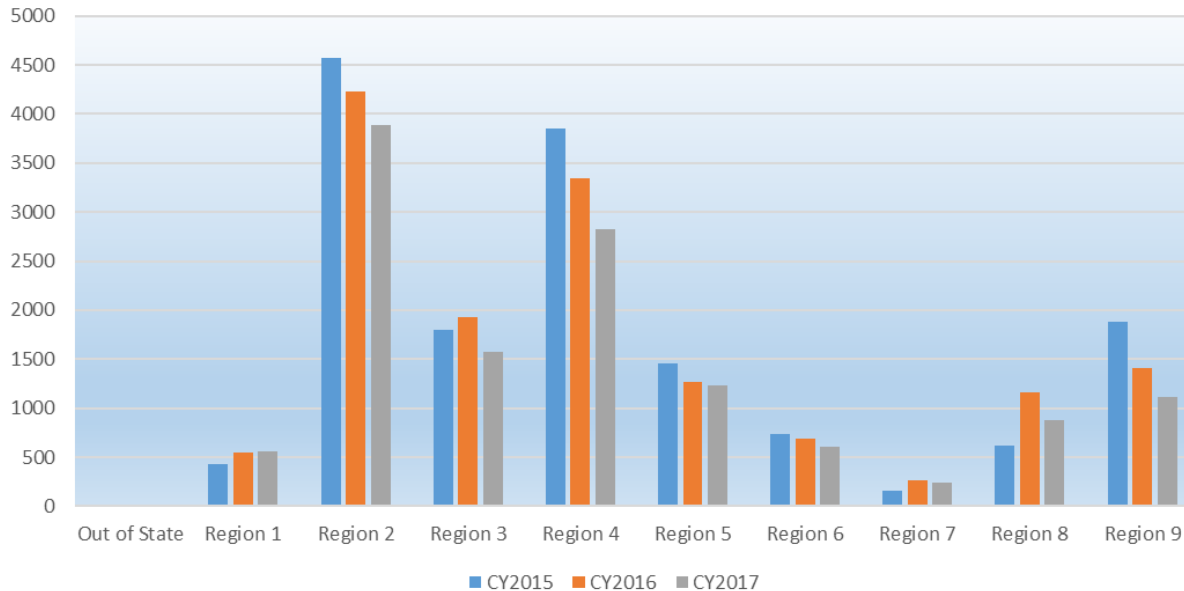
2017 Volume



Trauma by Region

Region	CY2015	CY2016	CY2017
Out of State	6	14	20
Region 1	426	543	560
Region 2	4571	4232	3890
Region 3	1802	1930	1580
Region 4	3852	3339	2829
Region 5	1456	1272	1233
Region 6	731	691	608
Region 7	154	260	242
Region 8	619	1164	881
Region 9	1877	1404	1114
Total	15494	14849	12957

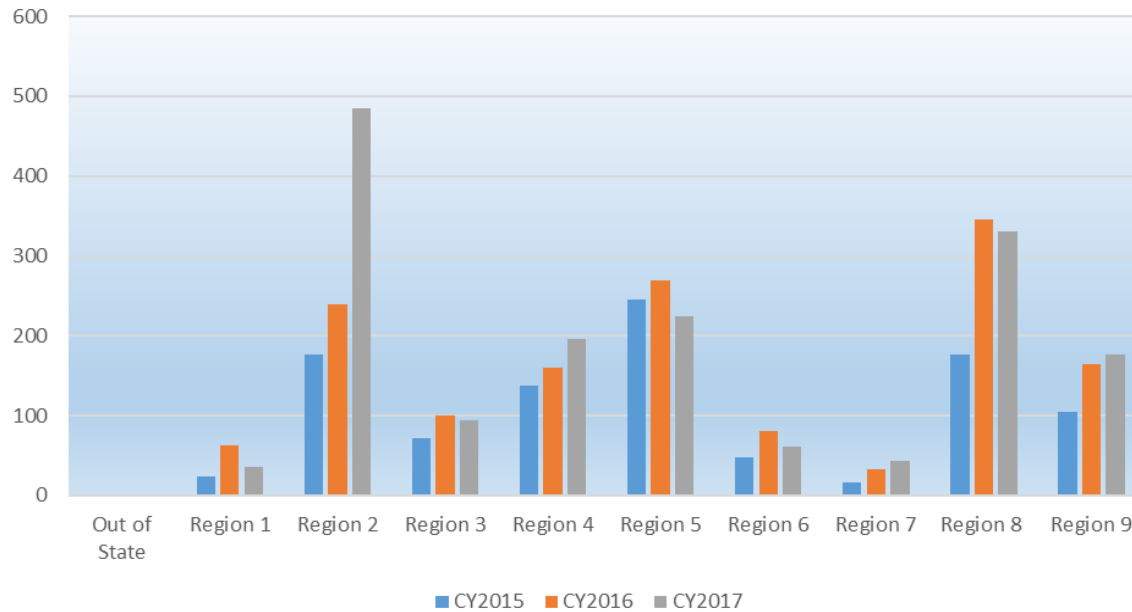
Trauma by Region and Year



Strokes by Region

Region	CY2015	CY2016	CY2017
Out of State	1	1	0
Region 1	24	62	36
Region 2	176	239	485
Region 3	71	100	94
Region 4	138	160	196
Region 5	246	270	225
Region 6	47	80	61
Region 7	16	33	43
Region 8	177	346	331
Region 9	104	165	177
Total	1000	1456	1648

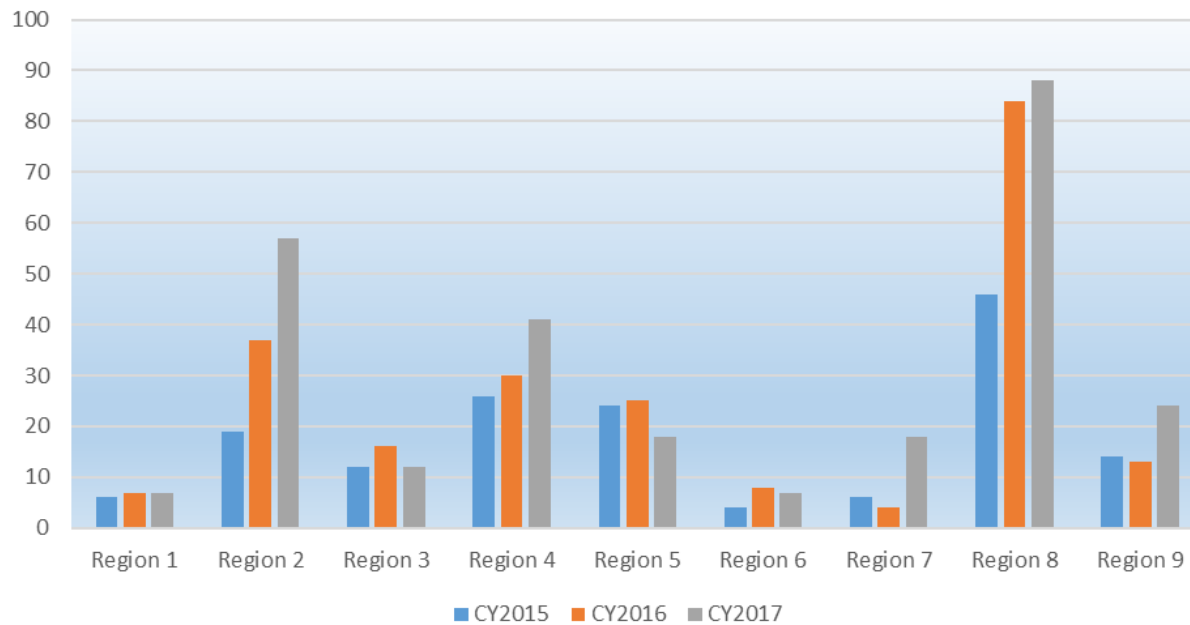
Strokes by Region and Year



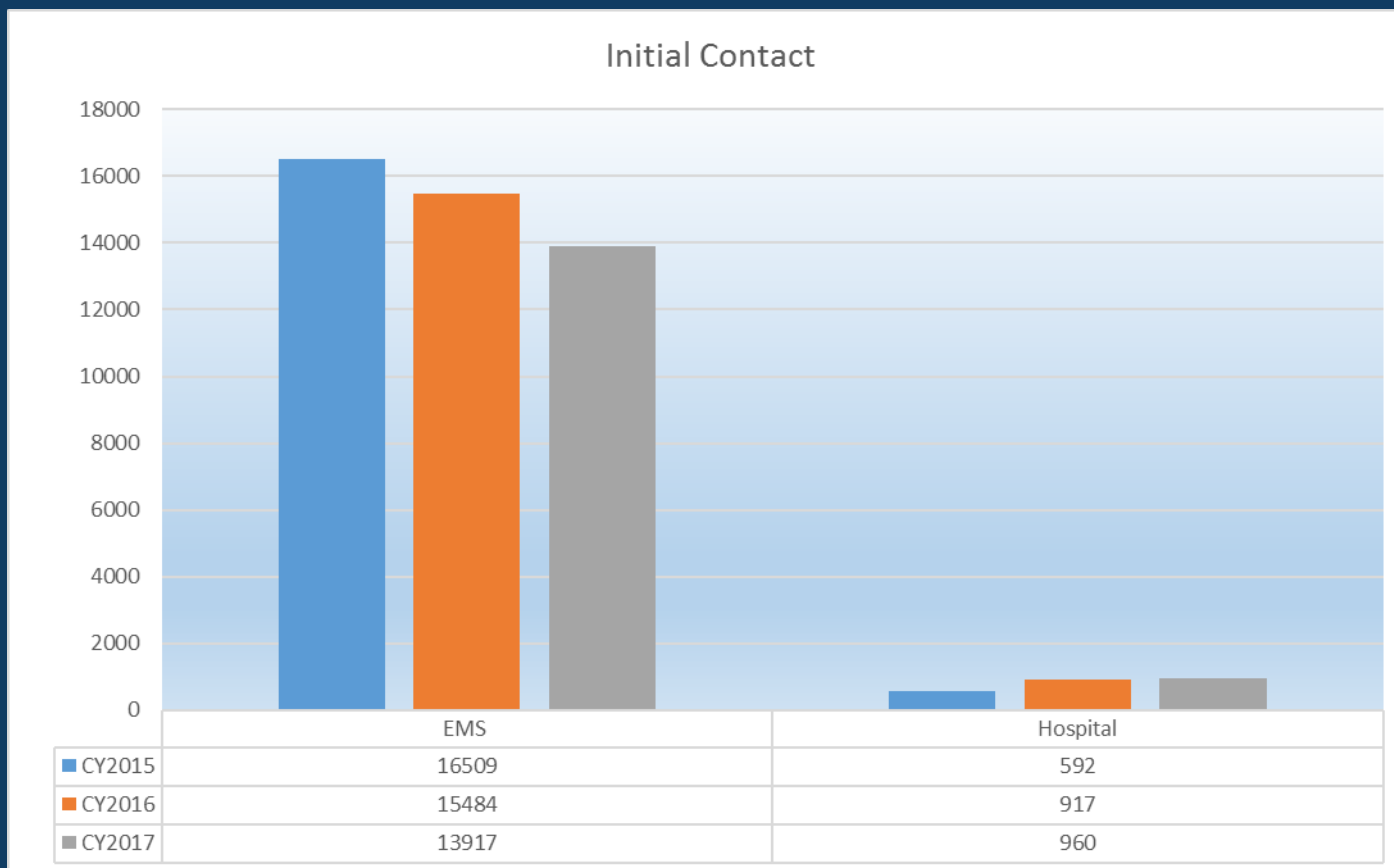
STEMI by Region

Region	CY2015	CY2016	CY2017
Region 1	6	7	7
Region 2	19	37	57
Region 3	12	16	12
Region 4	26	30	41
Region 5	24	25	18
Region 6	4	8	7
Region 7	6	4	18
Region 8	46	84	88
Region 9	14	13	24
Total	157	224	272

STEMI by Region and Year

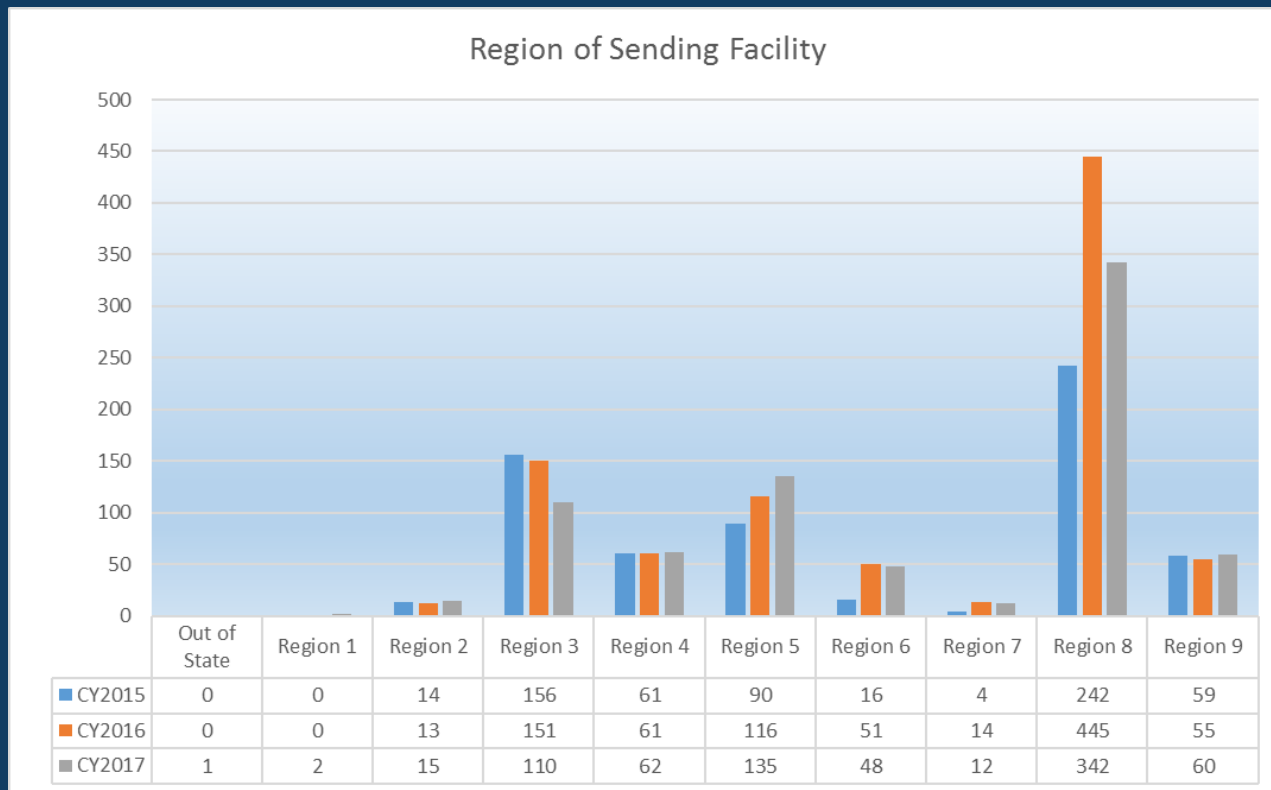


Initial Contact



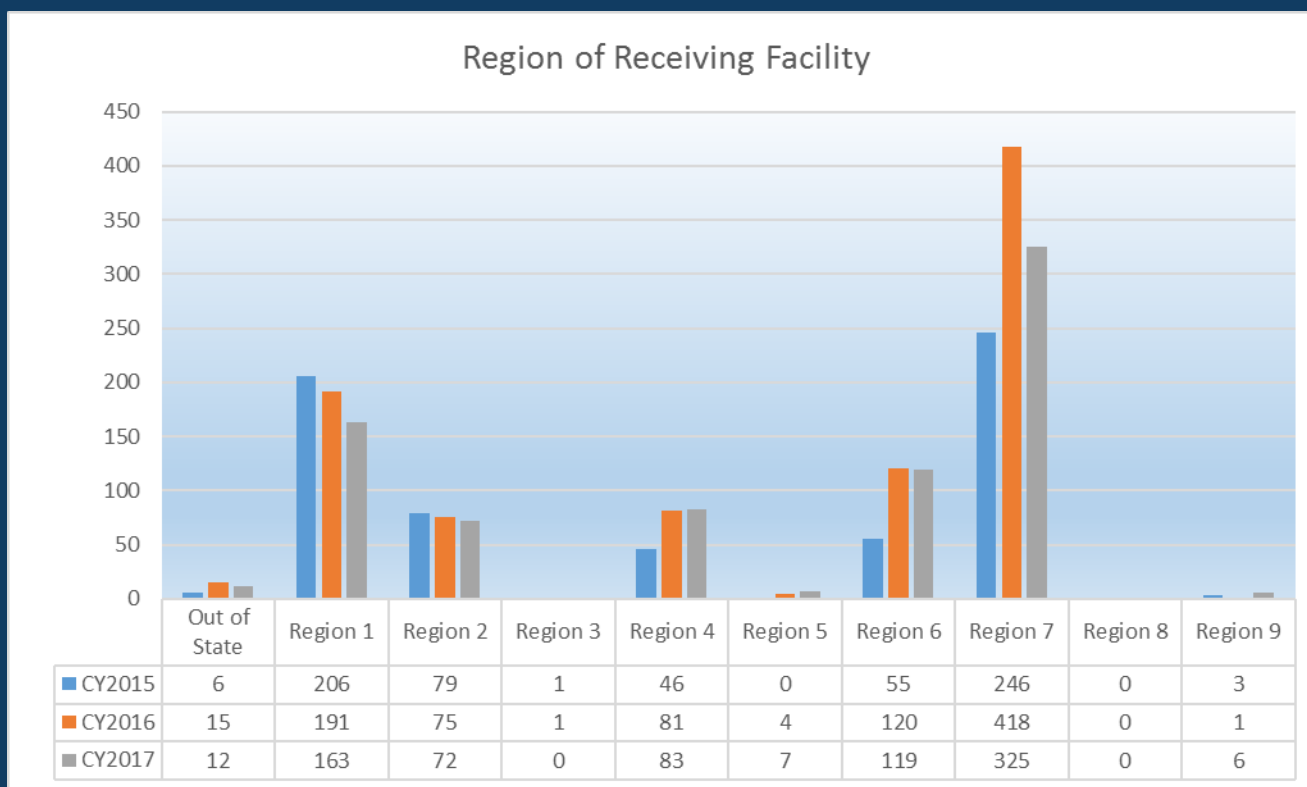
Out of Region Transfers – Region Sending (Trauma)

Year	Total
CY2015	642
CY2016	906
CY2017	787



Out of Region Transfers – Region Received (Trauma)

Year	Total
CY2015	642
CY2016	906
CY2017	787



Cause of Injury

Cause of Injury Top 10	Total
Falls	5532
Motor Vehicle Traffic Accident	4313
Firearm Assault	535
Motorcycle Accident	512
Motor Vehicle vs Pedestrian Accident	508
ATV Rider	228
Assault	223
Other Injury	141
Stabbing/Cutting Assault	138
Struck by Object	82

Falls accounted for 43% of LERN Trauma

MVC's accounted for 33% of LERN Trauma

Firearm Assaults accounted for 4% of LERN Trauma

3 highest in CY 2016:

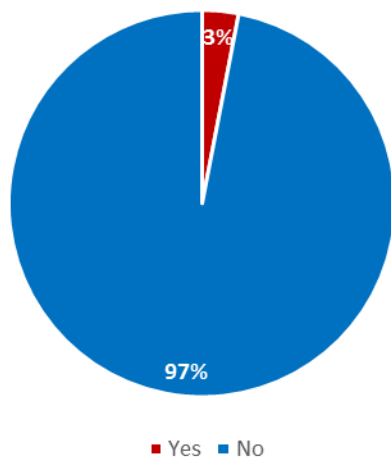
- Falls = 43%
- MVC's = 33%
- Pedestrian Traffic Accident = 4%

Firearm 5th highest COI in 2016 with 477

Secondary Transfers

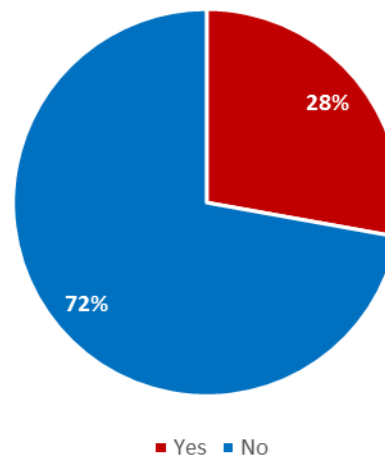
Transferred	Directed by LERN	Not Directed by LERN
Yes	329	482
No	10511	1250
Total	10840	1732

Directed by LERN



Secondary transfers for LERN directed patients remained 3% for 2016 and 2017

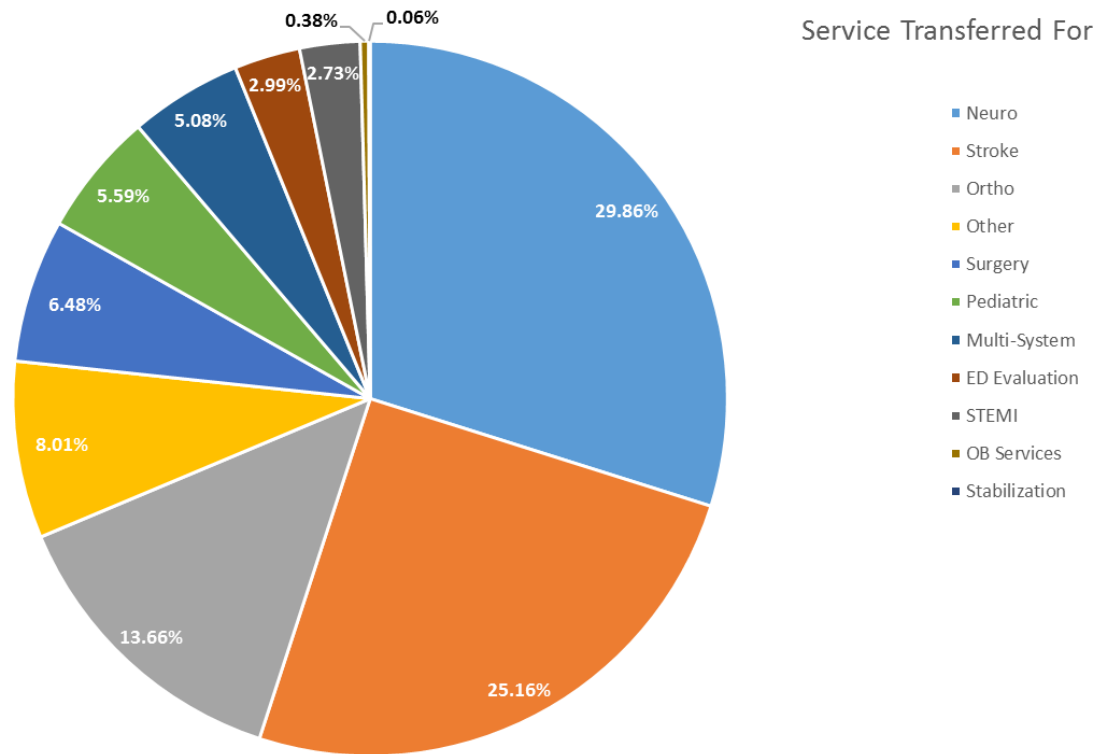
Not Directed by LERN



Patients not directed by LCC and required transfer increased from 22% in 2015, to 26% in 2016, and 28% in 2017

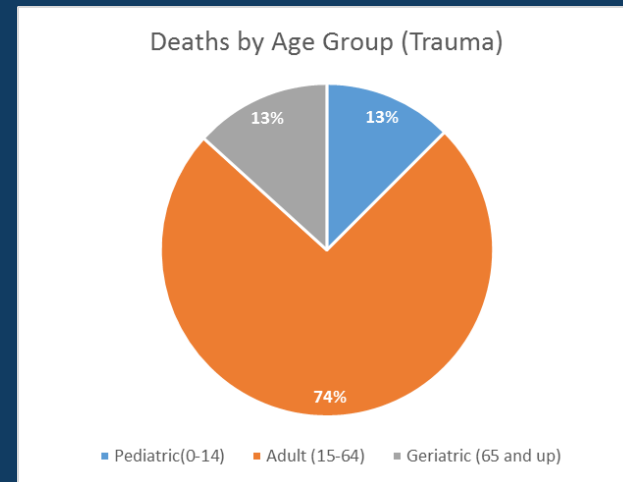
Service Transferred For

Service	Total
Neuro	470
Stroke	396
Ortho	215
Other	126
Surgery	102
Pediatric	88
Multi-System	80
ED Evaluation	47
STEMI	43
OB Services	6
Stabilization	1
Grand Total	1574



Deaths

Cause of Injury	Pediatric(0-14)	Adult (15-64)	Geriatric (65 and up)	Total
Motor Vehicle Traffic Accident	5	30	4	39
Firearm Assault	1	33		34
Motor Vehicle vs Pedestrian Accident	4	7		11
Motorcycle Accident (E81X.1)		11		11
Falls		4	7	11
Firearm Self Inflicted	2	5	5	12
Stabbing/Cutting Assault		2		2
Cut/Pierce			1	1
ATV Rider	1			1
Motor Vehicle Non-Traffic Accident		1		1
Caught in/between Objects		1		1
Struck by or Against	1			1
Assault		1		1
Firearm Injury (Accidental)	2			2
Total	16	95	17	128

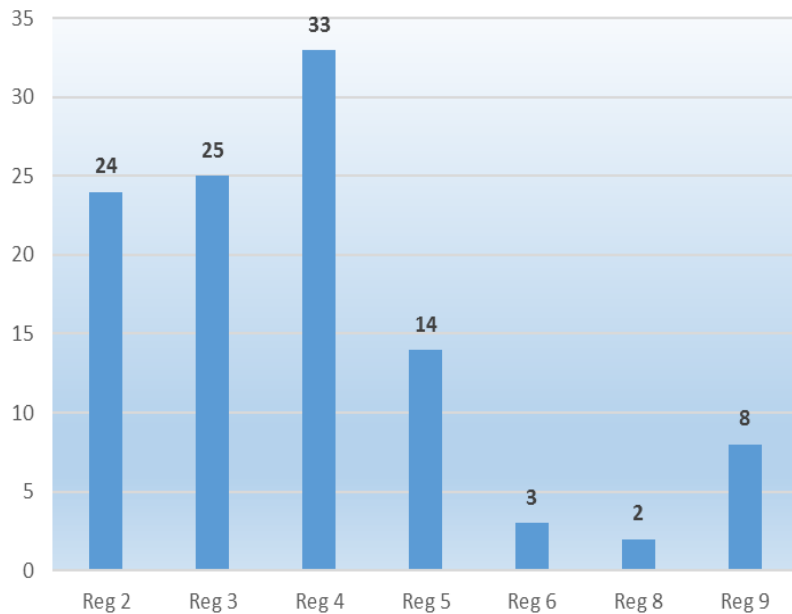


Primary Impression	Pediatric(0-14)	Adult (15-64)	Geriatric (65 and up)	Total
Trauma	16	95	17	128
STEMI	0	3	4	7
Stroke/CVA	0	0	6	6
Total	16	98	27	141

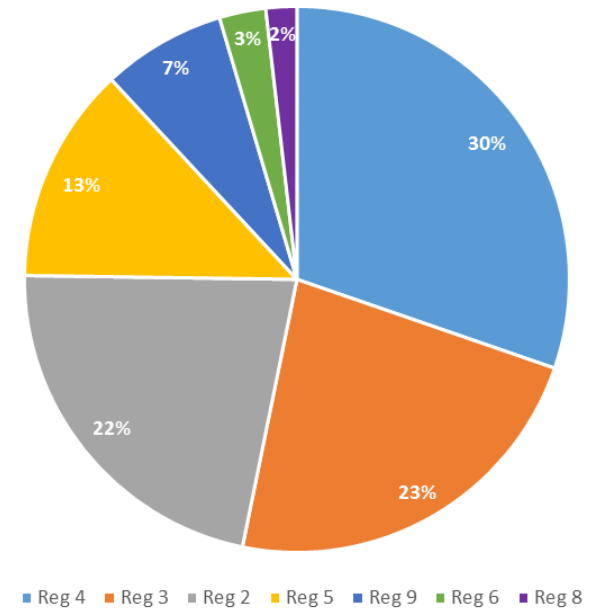
Mass Casualty Incidents

- LCC Managed 109 MCI events statewide involving 646 patients

Number of Incidents by Region

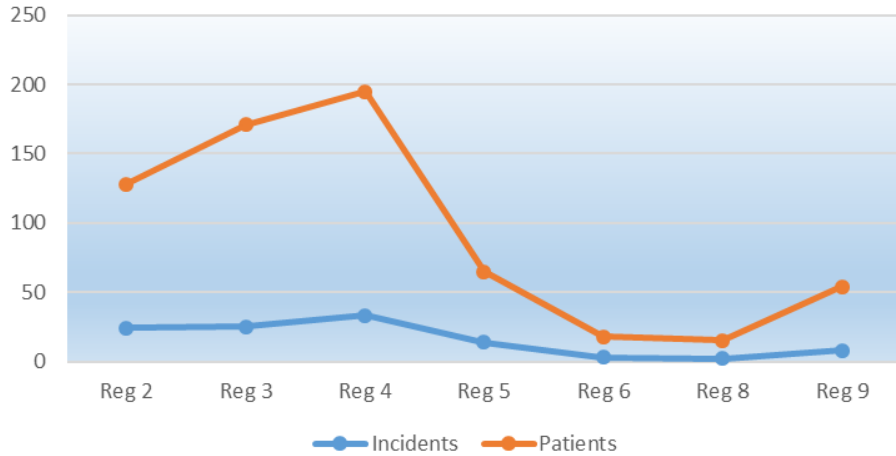


Percent by Region

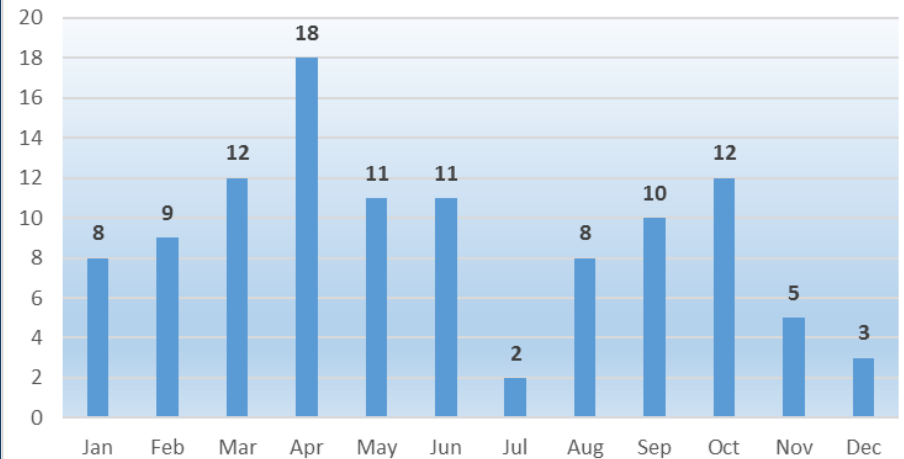


Mass Casualty Incidents

Regional Count



MCI Incidents by Month



Other Numbers



204 ESF-8 Tech Support Calls



55 ESF-8 Portal Alerts