

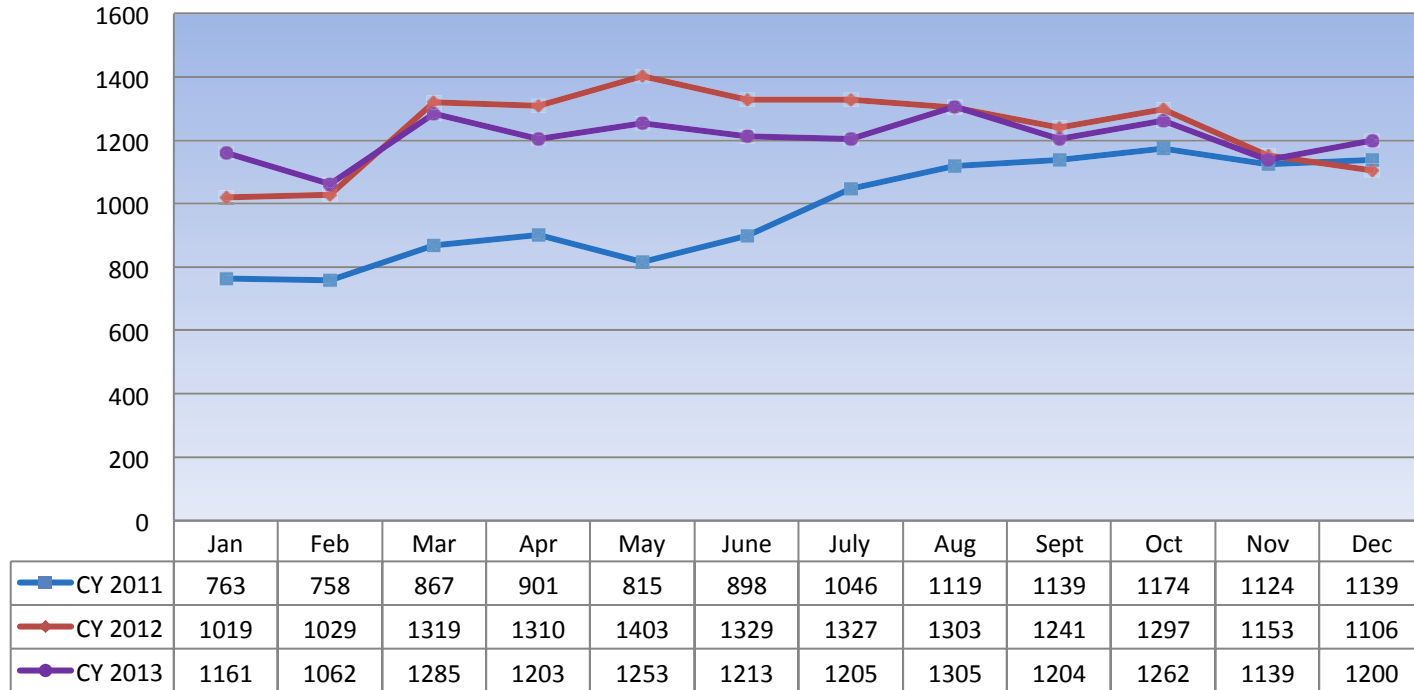


# LERN

## 2013 PATIENT DATA

# Annual Volume

## LERN Patient Monthly Volumes by Calendar Year



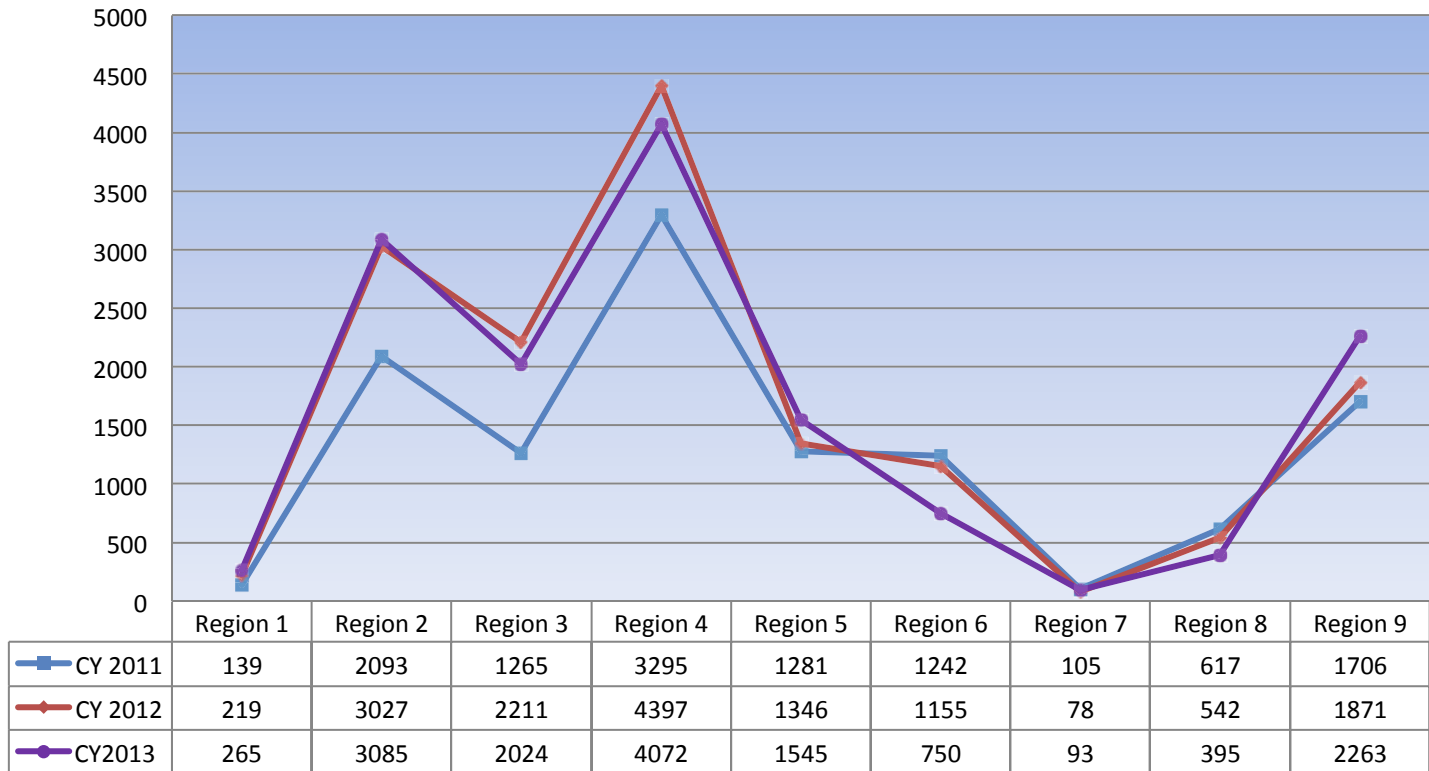
**2011 - 11743**

**2012 - 14836**

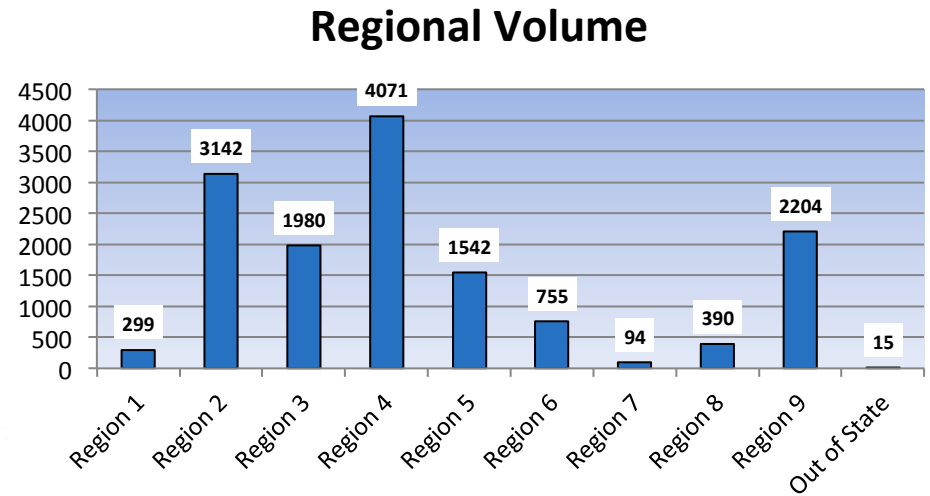
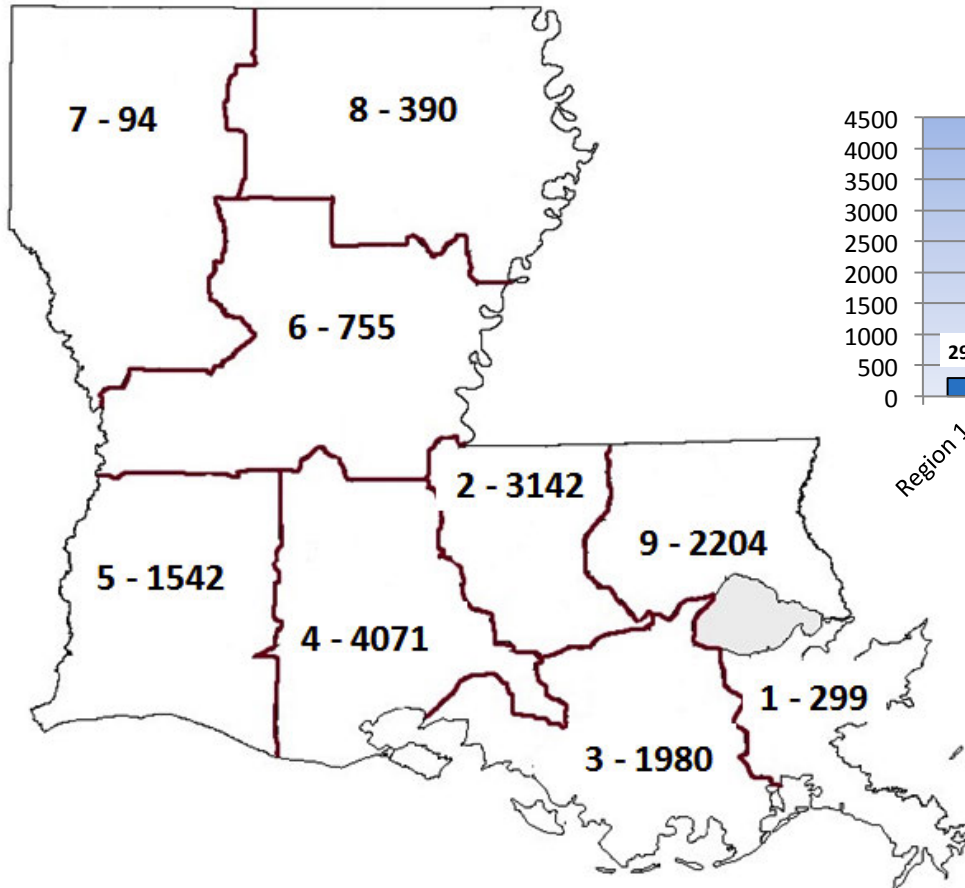
**2013 - 14492**

# Volume by Region

## LERN Patient Regional Volume by Year



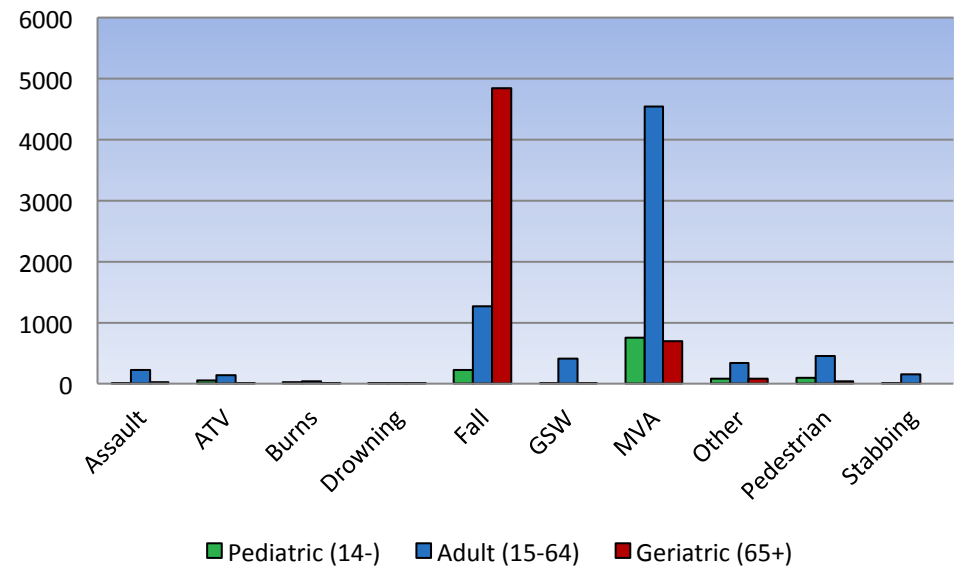
# 2013 Regional Volume



# Mechanism of Injury by Age Group

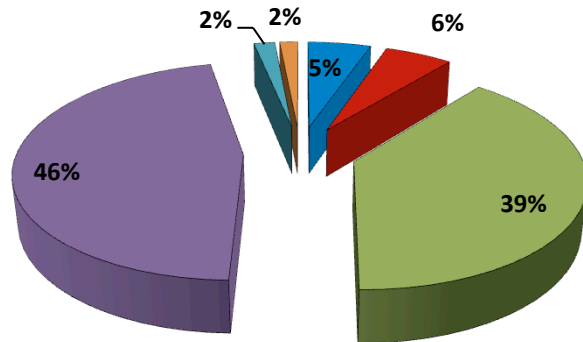
MOI	Pediatric (14-)	Adult (15-64)	Geriatric (65+)	Total
Assault	13	222	15	250
ATV	43	135	13	191
Burns	19	37	6	62
Drowning	5	1	5	11
Fall	220	1266	4843	6329
GSW	11	403	7	421
MVC	758	4534	699	5991
Other	83	336	84	503
Pedestrian	100	445	35	580
Stabbing	8	146	0	154
<b>Total</b>	<b>1260</b>	<b>7525</b>	<b>5707</b>	<b>14492</b>

MOI by Age



# Destination Determined By

## Destination Determination



- EMS Discretion
- LERN Negative
- LERN Protocol
- Patient Request = LERN Protocol
- Patient Request Against LERN Protocol
- POV

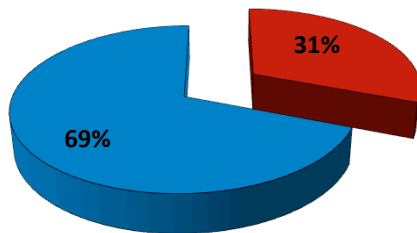
Destination Determined By	Total
EMS Discretion	771
LERN Negative	825
LERN Protocol	5688
Patient Request = LERN Protocol	6733
Patient Request Against LERN Protocol	255
POV	220
<b>Total</b>	<b>14492</b>

# Transfers

Transferred	Number of Patients
Yes	316
No	710
<b>Total</b>	<b>1026</b>

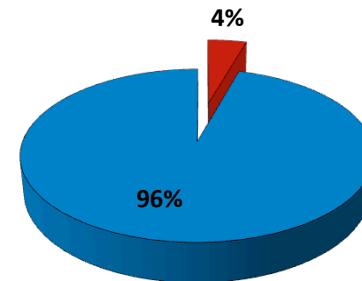
Transferred	Number of Patients
Yes	545
No	11876
<b>Total</b>	<b>12421</b>

**Patients NOT Directed by LERN  
Percentage Requiring Transfer**



■ Yes ■ No

**Patients Directed by LERN  
Percentage Requiring Transfer**

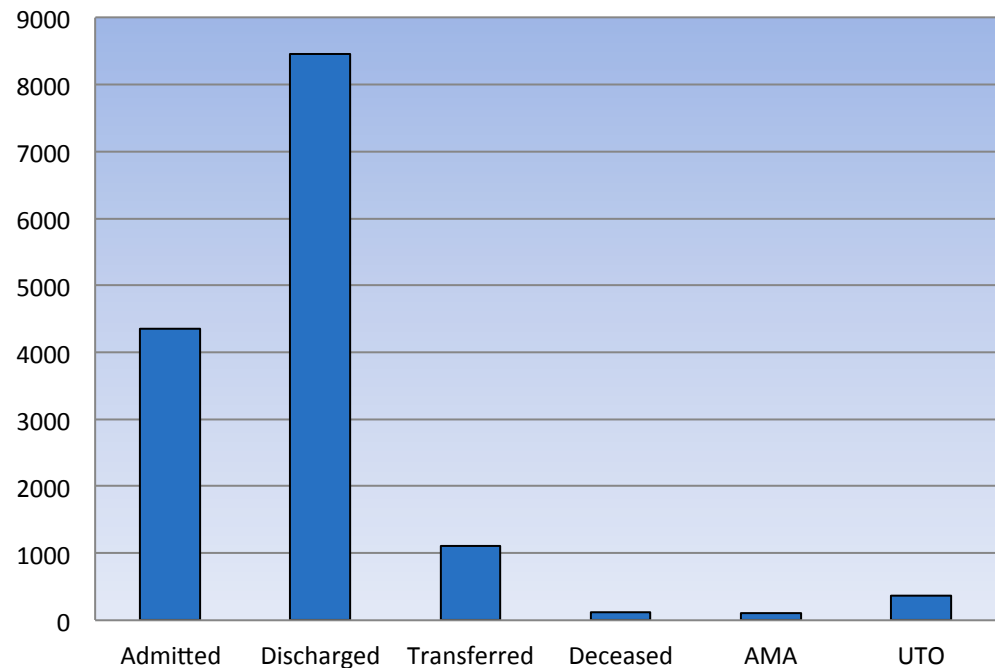


■ Yes ■ No

# Dispositions at First ED

Disposition	Total
Admit Neuro Surgery	213
Admit OB Observation	40
Admit Observation	1717
Admit Ortho Surgery	1860
Admit Peds Observation	58
Admit Surgery	466
Deceased	110
Discharged	8462
Left AMA	104
Transferred Out of Region	665
Transferred to Regional DC	439
UTO	358
<b>Total</b>	<b>14492</b>

## Patient Dispositions

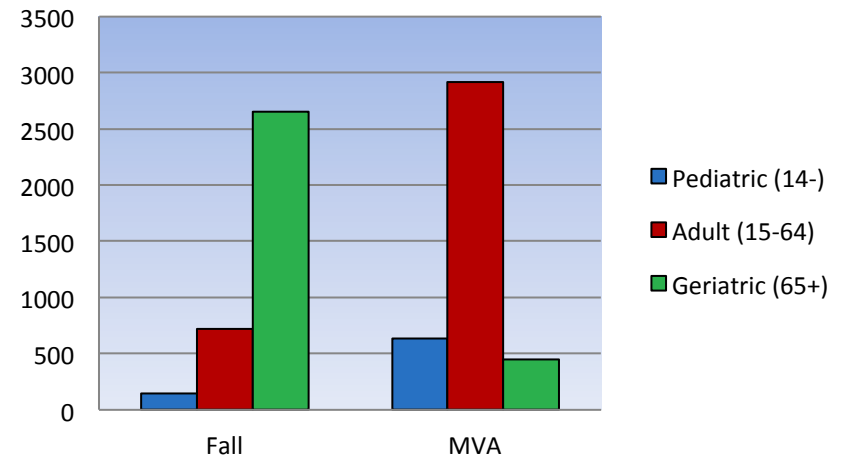




# Discharged Patients by MOI and Age

MOI	Total	Discharged	Percent Discharged
Assault	250	139	55.60%
ATV	191	82	42.93%
Burns	62	30	48.39%
Drowning	11	3	27.27%
Fall	6329	3518	55.59%
GSW	421	73	17.34%
MVC	5991	4001	66.78%
Other	503	241	47.91%
Pedestrian	580	309	53.28%
Stabbing	154	66	42.86%
<b>Total</b>	<b>14492</b>	<b>8462</b>	<b>58.39%</b>

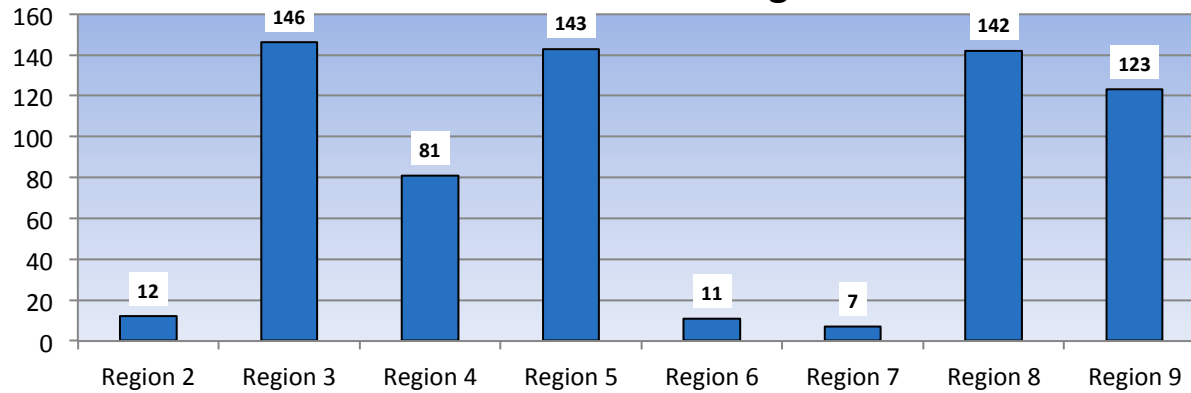
Discharged by Age Group



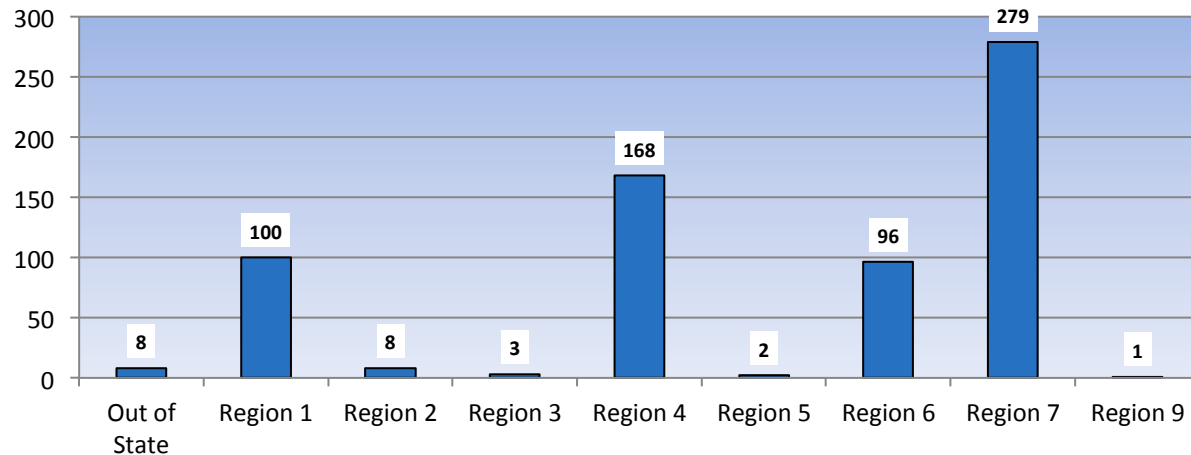
- Falls accounted for 44% of all patient MOI's and 42% of discharged patients
- MVC's accounted for 41% of all patient MOI's and 47% of discharged patients

# Regional Movement

## Transferred Out of Region



## Transferred Into Region



# Other Numbers

- **66,942 calls in and out of LCC**
- **195 ESF 8 support calls**
- **248 alerts sent for 88 separate events**

# Recap of 2013

## 2013 Exercises

- State Wide Emergency Preparedness Drill
- Region 3 Active Shooter Drill
- EMS TOC(Tactical Operations Center)Tabletop – Emergency preparedness training for hurricane readiness
- Fort Polk Pandemic Influenza Exercise
- MCI Drill / Training with Acadian Ambulance – Conducted instruction and scenario evaluation for small scale MCI management
- HHS HAvBED Exercise
- Ochsner Health System Code Yellow Functional Exercise

## 2013 Live Events

- Williams/Olefin Explosion
- C F Industries Explosion
- Lawtell Train Derailment
- Fort Polk Night Jump
- Alumina Refinery Chemical Release – Notification of incident including distribution of MSDS for chemical released via ESF 8 Notification System
- Tropical Storm Karen – TOC management
- PPG Plant Explosion

# Questions?

