



State Trauma Registry Report

Chris Hector

2018 Data compiled from current patient records reported from Ten facilities to LERN State Trauma Registry. Includes standard dataset established by National Trauma Data Bank (NTDB)

Figure 1: Age Distribution

Patients reported by age group. Highest patient population lies in the age range 25 – 34 years old. This is also the highest patient population on a national level.

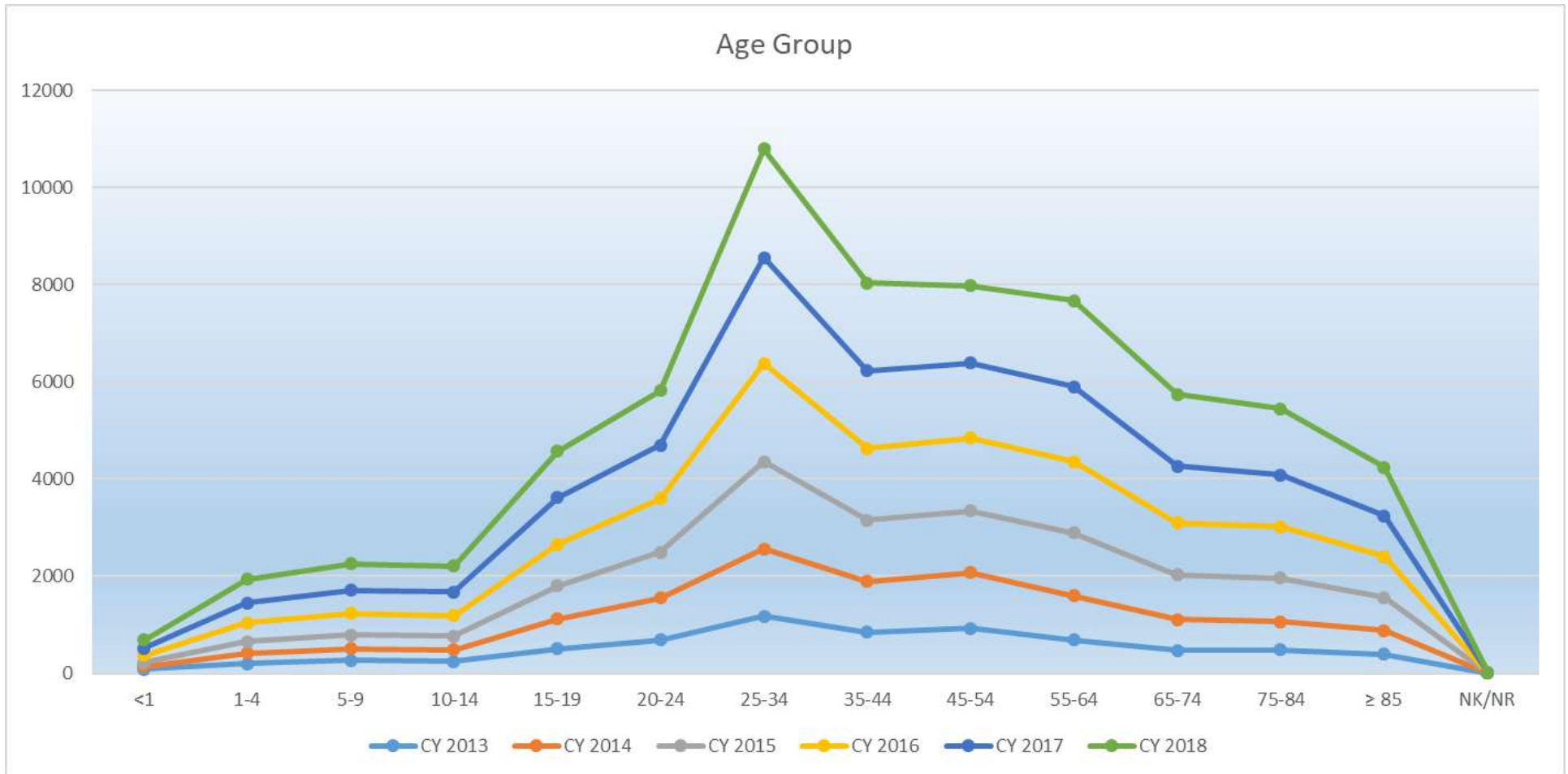


Figure 2: Cause of Injury

Cause of Injury	Total
Fall	5414
Motor Vehicle Accident	3095
Assault	2235
Pedestrian	665
Motorcycle	588
Struck By or Against Object	310
Machinery / Equipment Accident	304
ATV Accident	290
Contact by Sharp Object	273
Pedal Cycle Accident	256
Suicide or Self Inflicted Injury	207
Firearm Discharge	207
Animal Bite / Contact / Rider	192
Caught, Crushed, Pinched	177
Sport / Activity Accident	172
Acc Struck by Person	123
Other / Unspecified	109
Burns, Fire, Flame, Explosion, Smoke	79
Transport Accident	66
Abuse or Neglect	46
Watercraft Accident	41
Contact Hot Food or Object	41
Legal Intervention	32
Foreign Body	30
Overexertion	27
Diving Drowning or Submersion	21
Railway Accident	16
Electrical Accident	5
Aircraft Accident	4
Choking	3
NK/NR	3
Surgical Procedure	2
Weather Accident	2
Total	15035

Falls by Age Group		
Pediatric (0-14)	546	10.08%
Adult (15-64)	1846	34.10%
Geriatric (>64)	3021	55.80%
NK/NR	1	0.02%
Total	5414	100.00%

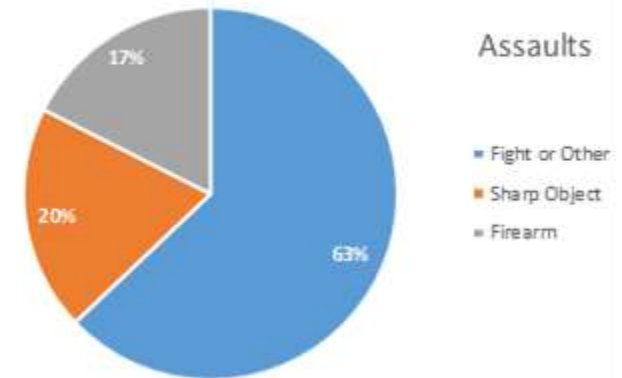


Figure 3: Cause of Injury by Mortality

Cause If Injury	Deaths
Fall	172
Assault	152
Motor Vehicle Accident	149
Suicide or Self Inflicted Injury	69
Pedestrian	60
Motorcycle	28
Firearm Discharge	11
Pedal Cycle Accident	10
Struck By or Against Object	6
Other / Unspecified	6
ATV Accident	6
Legal Intervention	5
Transport Accident	4
Diving Drowning or Submersion	3
Abuse or Neglect	2
Caught, Crushed, Pinched	2
Electrical Accident	1
Machinery / Equipment Accident	1
Railway Accident	1
Total	688

Age Group	ISS Score Range					Total
	1-8	9-15	16-24	>24	NK/NR	
Pediatric (0-14)		1		1		2
Adult (15-64)	6	3	5	17	1	32
Geriatric (>64)	14	43	21	60		138
Total	20	47	26	78	1	172

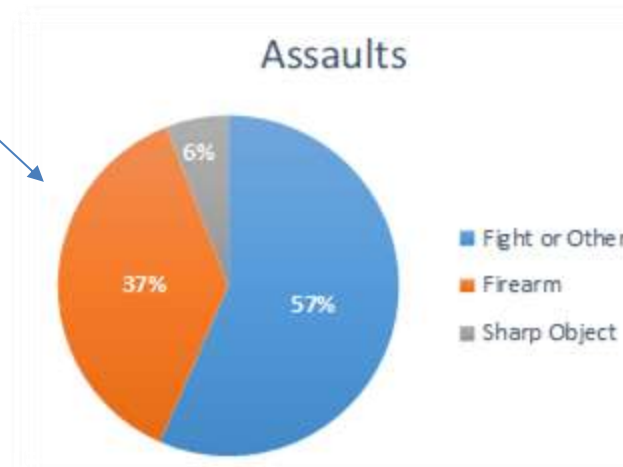


Figure 4: Received Pre-Hospital or by Transfer

Patients reported as received pre-hospital or transferred from another acute care facility. Patients transferred from a private physician office, stand-alone ambulatory surgery center, or delivered to hospital by a non-EMS transport are not considered an inter-facility transfer. Outlying facilities that provide emergency services or that are utilized to stabilize a patient are considered acute care facilities.

Received By	CY 2013	CY 2014	CY 2015	CY 2016	CY 2017	CY 2018
Pre-Hospital	5110	6170	7971	9677	10411	11185
Inter-Facility Transfer	1858	2256	2625	3272	3129	3850
Total	6968	8426	10596	12949	13540	15035

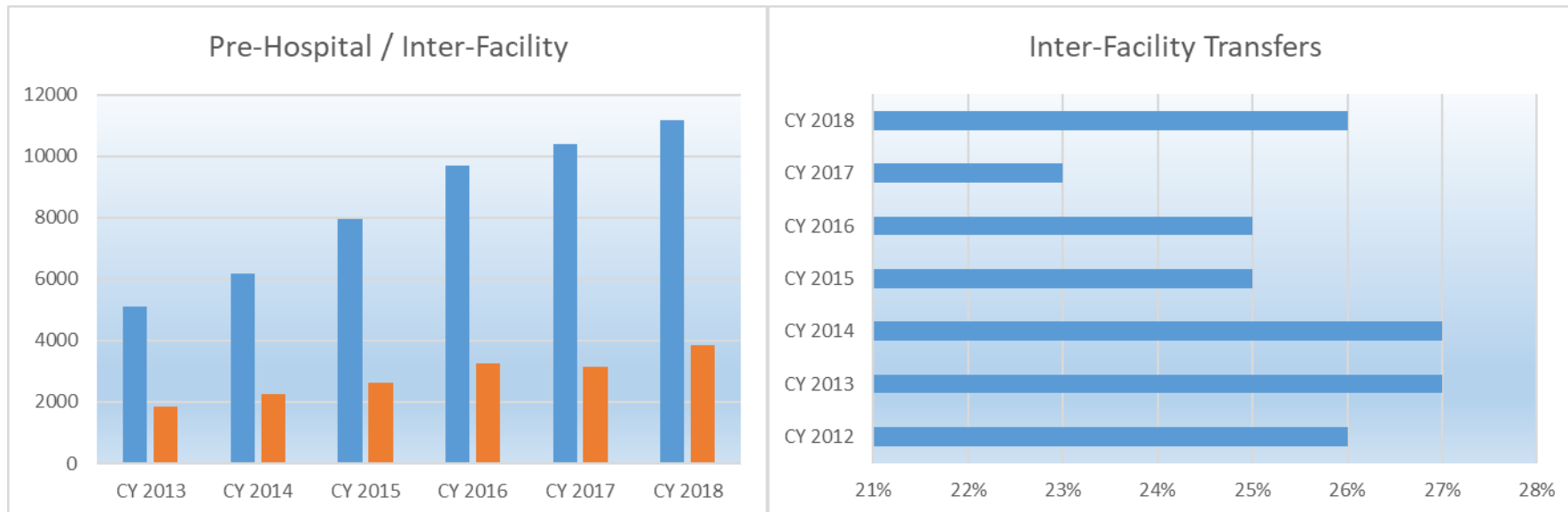


Figure 5: Payor Mix

Not Paid is inclusive of Primary Payment listed as Other, Not Known, Self-Pay, or Not Billed.

Paid/Not Paid	CY 2013	Percent	CY 2014	Percent	CY 2015	Percent	CY 2016	Percent	CY 2017	Percent	CY 2018	Percent
Paid	4489	64%	5402	64%	7381	70%	9876	77%	11212	83%	12231	81%
Not Paid	2479	36%	3026	36%	3215	30%	3018	23%	2328	17%	2804	19%
Total	6968	100%	8428	100%	10596	100%	12894	100%	13540	100%	15035	100%

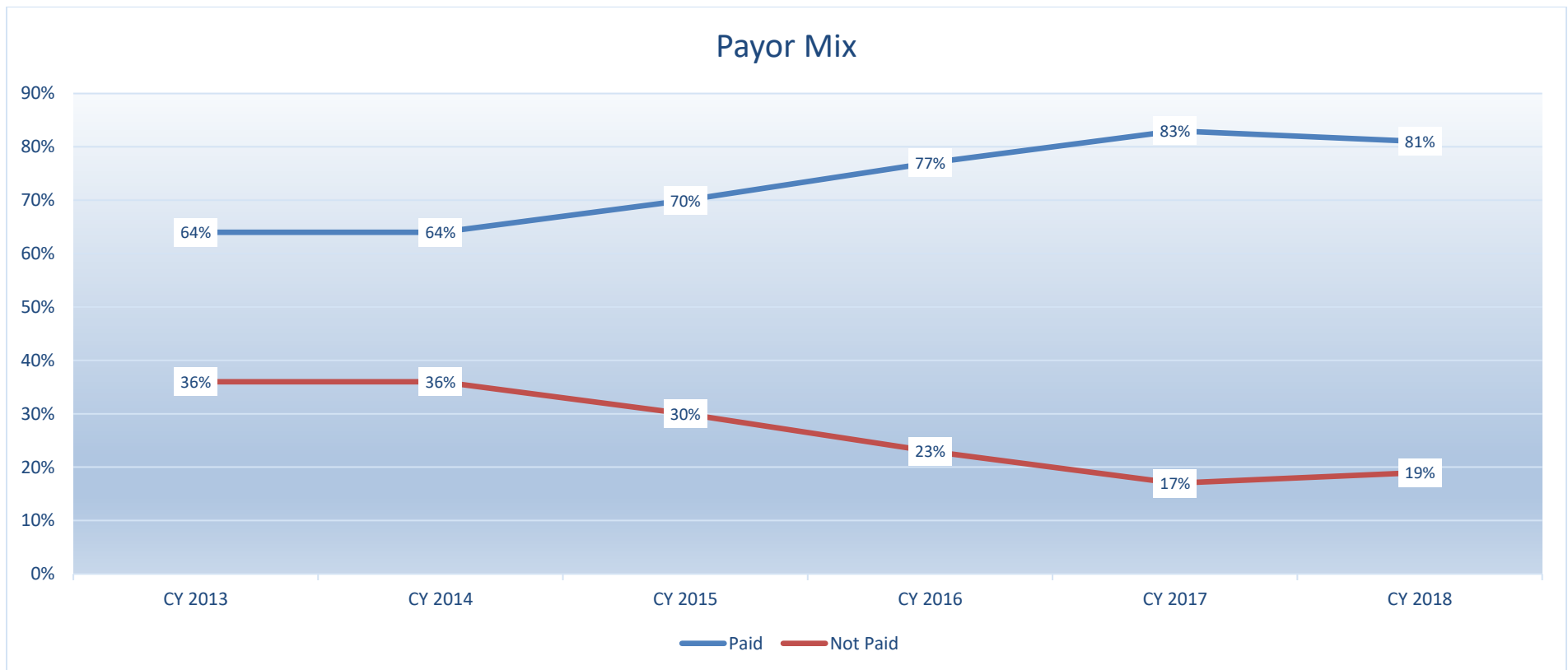


Figure 6: Payor Type

Payor type for paid patients. Data for 2016 and 2017 include Children’s Hospital New Orleans, which was not included in previous years.

Paid Method	CY2013	Percent	CY2014	Percent	CY2015	Percent	CY2016	Percent	CY2017	Percent	CY2018	Percent
Medicare	1448	32%	1782	33%	2468	33%	2904	29%	3234	29%	3830	31%
Medicaid	1159	26%	1287	24%	1880	26%	3568	36%	4812	43%	4961	41%
Private / Commercial	1814	40%	2207	41%	2740	37%	3234	33%	3025	27%	3221	26%
Other Gov	68	2%	126	2%	293	4%	170	2%	141	1%	219	2%
Total	4489	100%	5402	100%	7381	100%	9876	100%	11212	100%	12231	100%

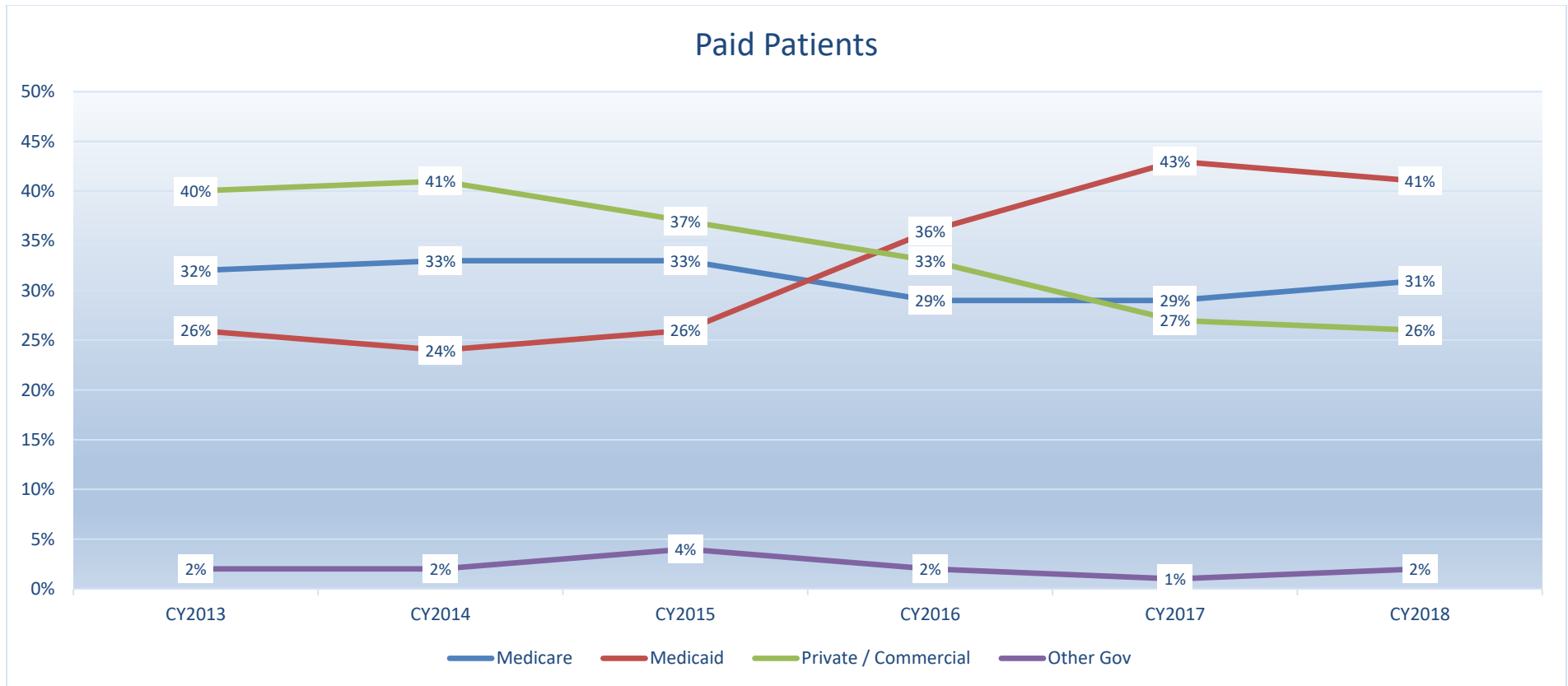


Figure 7: Hospital Average/Median Length of Stay

The hospital length of stay (LOS) is calculated by using the admit time/date and the discharged time/date. For the purpose of this report days were adjusted based on each partial or full day is measured as one calendar day. Patients admitted and discharged on same day count as 0.

Year	Average Hospital LOS	Median
CY 2012	5.33	2
CY 2013	5.19	2
CY 2014	5.20	3
CY 2015	5.41	3
CY 2016	5.38	3
CY 2017	5.41	3
CY 2018	5.33	3

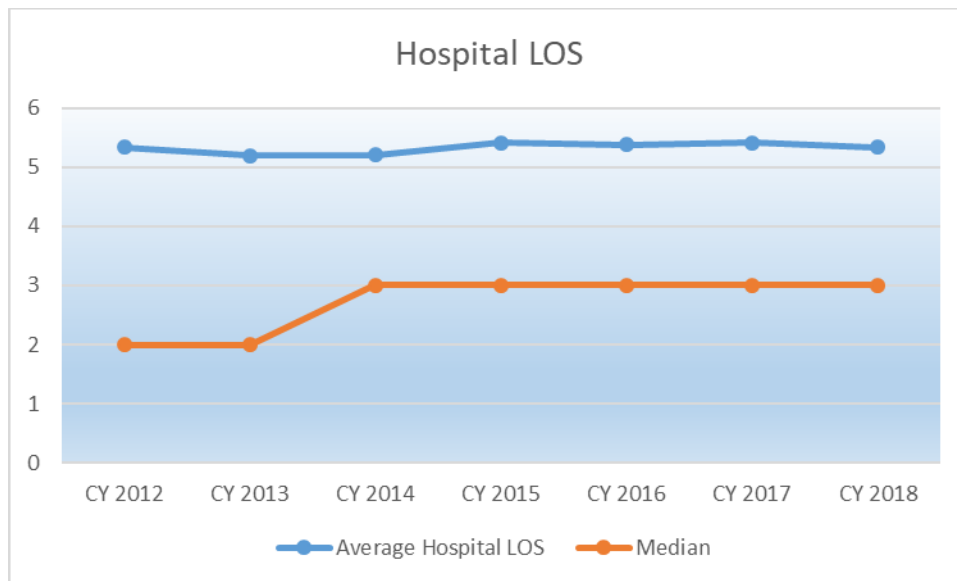


Figure 8: ICU Days

The intensive care unit (ICU) length of stay is the cumulative amount of time spent in ICU. Each partial or full day is measured as one calendar day.

ICU Days	Total	Percent
0	10959	72.89%
1-5	3144	20.91%
6-10	529	3.52%
11-15	192	1.28%
16-20	93	0.62%
21-25	56	0.37%
26-30	26	0.17%
31-35	23	0.15%
36-40	2	0.01%
41-45	4	0.03%
46-50	3	0.02%
51-55	1	0.01%
61-65	1	0.01%
71-76	2	0.01%
Total	15035	100%

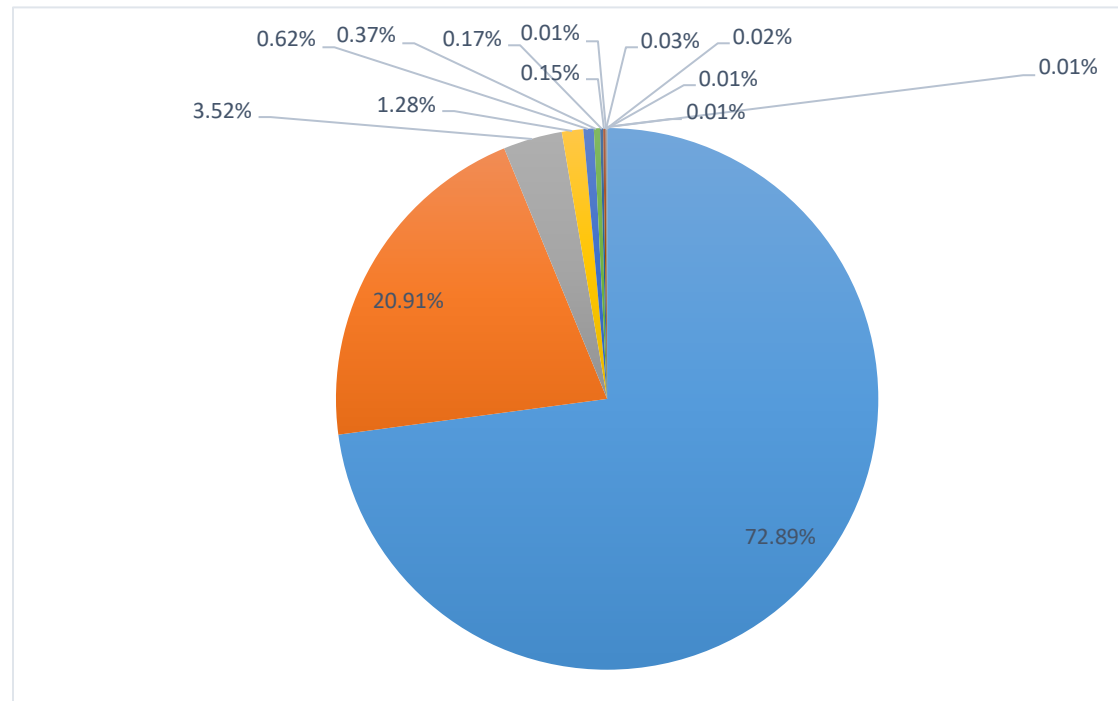


Figure 9: Blood Alcohol Testing

Of the 15,035 patients in the 2018 data, 51% were not tested and 49% were tested. Of the patients tested, 1600 had a BAC \geq 0.08% (above legal limit).

Tested	Total	Percent
Yes	7311	48.63%
No	7714	51.31%
NK/NR	10	0.07%
Total	15035	100.00%

Tested Patients	
BAC Level	Total
0	2864
0.01 - 0.05%	2727
0.06 - 0.15%	633
0.16 - 0.30%	927
0.31 - 0.45%	133
>0.45%	10
NK/NR	17

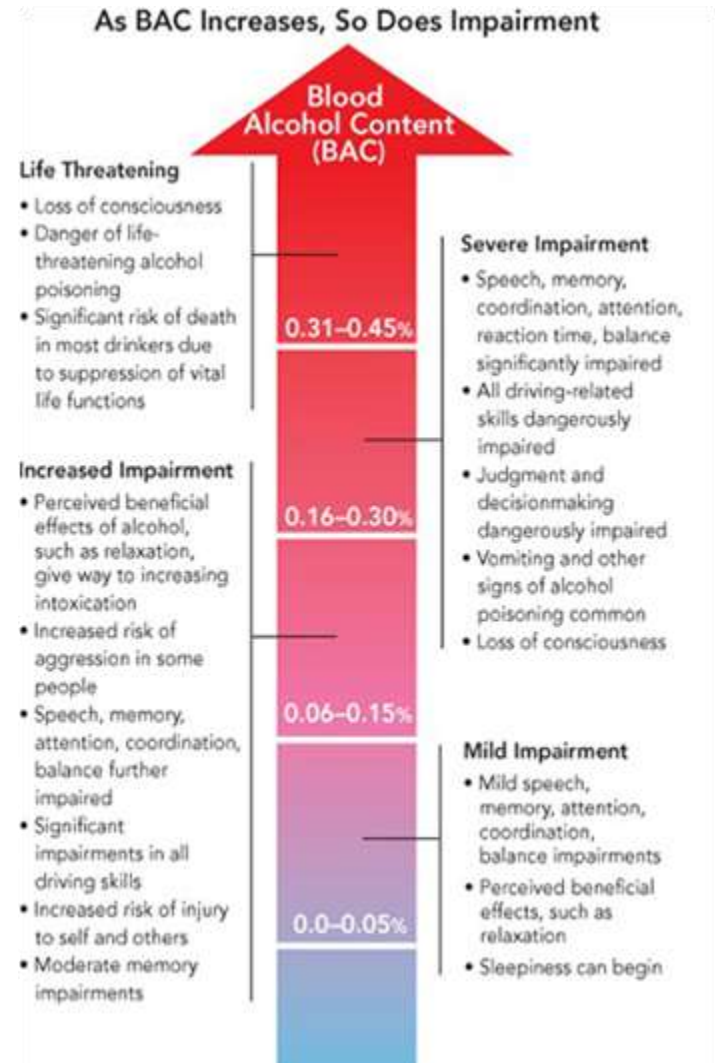
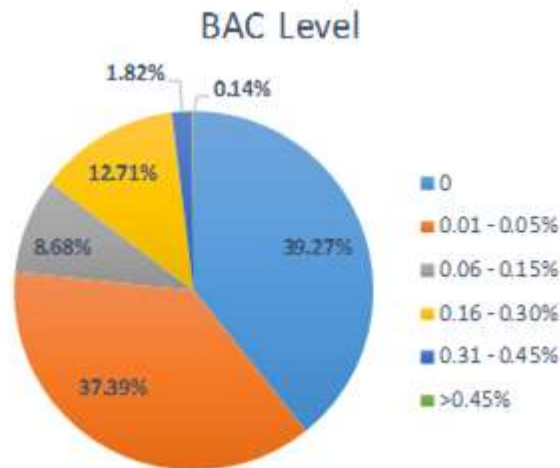


Figure 10: Drug Screening

Patients reported by based on drug screening. Of the 15,035 patients in the 2018 data, 60% were not tested, 17% tested negative, and the remaining 23% tested positive for drugs.

Drug Screening	Total	Percent
Not Tested	9045	60.16%
None	2498	16.61%
THC (Cannabinoid)	1110	7.38%
OPI (Opioid)	771	5.13%
BZO (Benzodiazepines)	652	4.34%
AMP (Amphetamine)	540	3.59%
COC (Cocaine)	330	2.19%
BAR (Barbiturate)	42	0.28%
mAMP (Methamphetamine)	19	0.13%
PCP (Phencyclidine)	7	0.05%
MDMA (Ecstasy)	7	0.05%
MTD (Methadone)	7	0.05%
Other Evidence of Drugs	5	0.03%
TCA (Tricyclic Antidepressant)	2	0.01%
Total	15035	100.00%

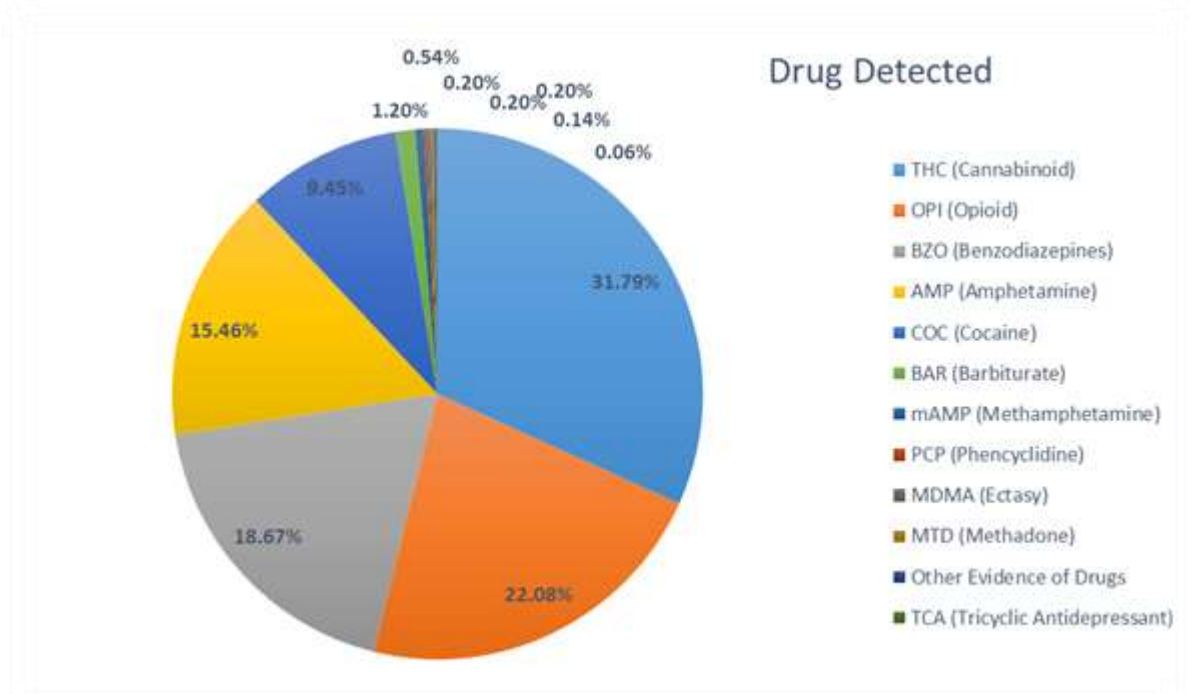
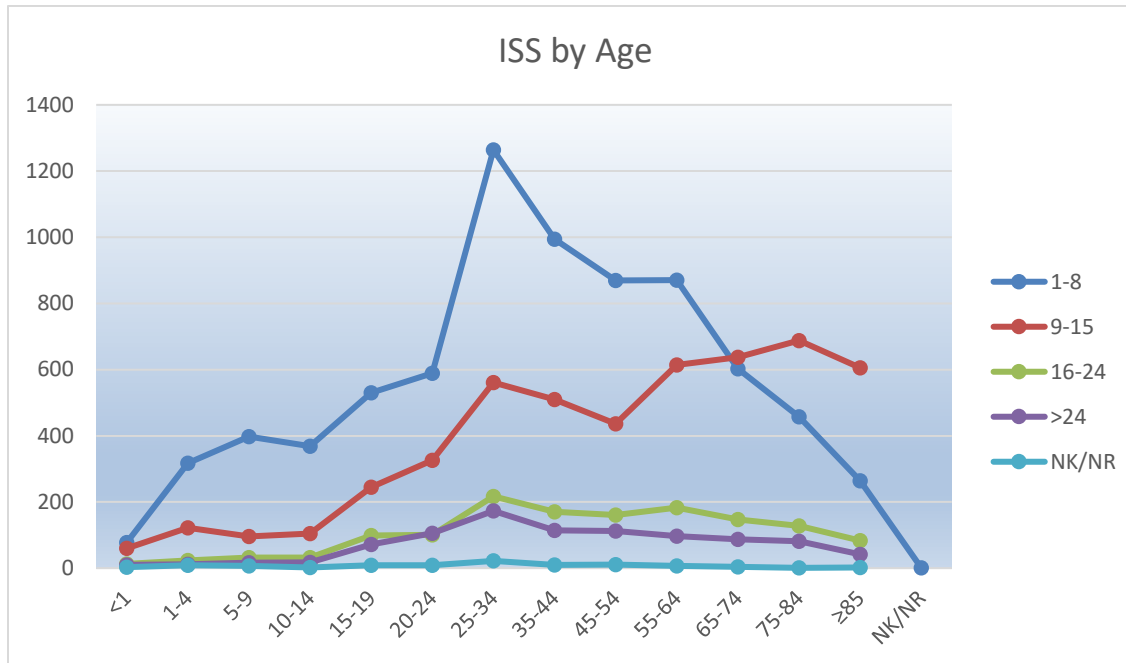


Figure 11: ISS by Age

Patients reported by age group and ISS score. The Injury Severity Score (ISS) is a system for numerically stratifying injury severity. The ISS system has a range of 1-75 and risk of death increases with a higher score. NTDB categorizes ISS 1-8 as Minor; 9-15 as Moderate; 16-24 as Severe; and greater than 24 as Very Severe.



Mean ISS Score			
Year	All Facilities	Level I and II	Level III Only
CY 2012	10.79	10.79	N/A
CY 2013	10.95	10.95	N/A
CY 2014	10.80	10.81	8.17
CY 2015	10.32	10.42	7.60
CY 2016	9.27	9.29	8.52
CY 2017	8.45	8.46 (8.64 without Childrens)	8.24
CY 2018	8.75	8.82 (8.96 without Childrens)	8.09

Figure 12: Total Patients in Registry by Year / Deaths Percent by Year

Trauma registry patient totals by year. In 2012 there were 4 facilities reporting. In 2018 the number of facilities reporting increased to 10. Death percent includes patient that arrived to ED without signs of life.

