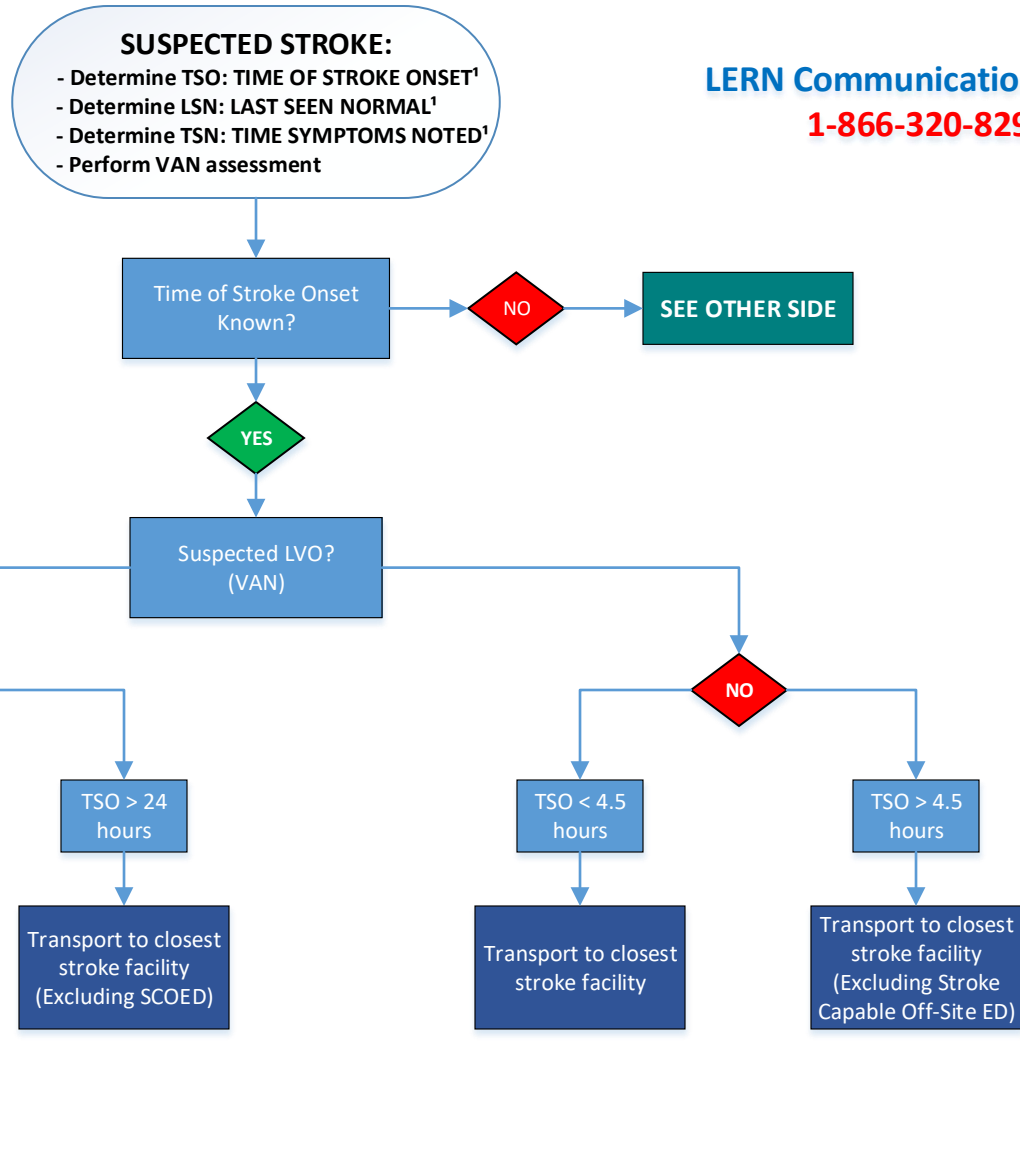


**STROKE DESTINATION PROTOCOL**

**Time of Onset Known**



**Guiding Principles:**

<sup>1</sup> When stroke is witnessed TSO, LSN, and TSN are the same.

<sup>2</sup> Additional transport time is calculated by considering drive time from scene to each facility.

**Stroke Facility Definitions: \*Endovascular Capable**

\*CSC: Comprehensive Stroke Center

\*TSC: Thrombectomy Capable Stroke Center

\*PSC-E: Primary Stroke Center with Endovascular (May not be 24/7. Contact LCC to verify)

PSC: Primary Stroke Center

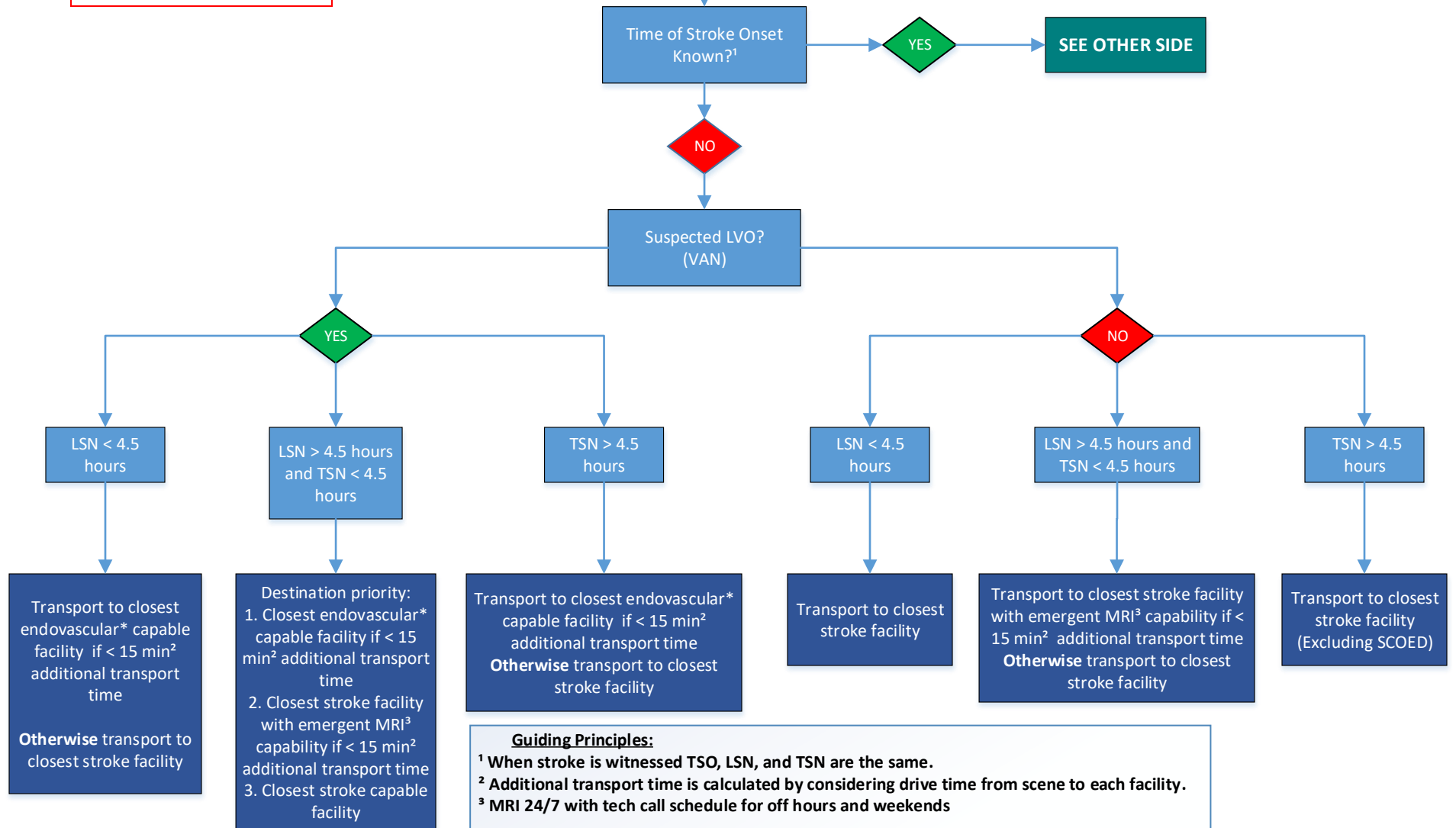
ASRH: Acute Stroke Ready Hospital

SCOED: Stroke Capable Off Site ED

**STROKE DESTINATION PROTOCOL**

**Time of Onset Unknown**

**SUSPECTED STROKE:**  
 - Determine TSO: TIME OF STROKE ONSET<sup>1</sup>  
 - Determine LSN: LAST SEEN NORMAL<sup>1</sup>  
 - Determine TSN: TIME SYMPTOMS NOTED<sup>1</sup>  
 - Perform VAN assessment



**Guiding Principles:**  
<sup>1</sup> When stroke is witnessed TSO, LSN, and TSN are the same.  
<sup>2</sup> Additional transport time is calculated by considering drive time from scene to each facility.  
<sup>3</sup> MRI 24/7 with tech call schedule for off hours and weekends

**Stroke Facility Definitions: \*Endovascular Capable**  
 \*CSC: Comprehensive Stroke Center  
 \*TSC: Thrombectomy Capable Stroke Center  
 \*PSC-E: Primary Stroke Center with Endovascular (May not be 24/7. Contact LCC to verify)  
 PSC: Primary Stroke Center  
 ASRH: Acute Stroke Ready Hospital  
 SCOED: Stroke Capable Off Site ED