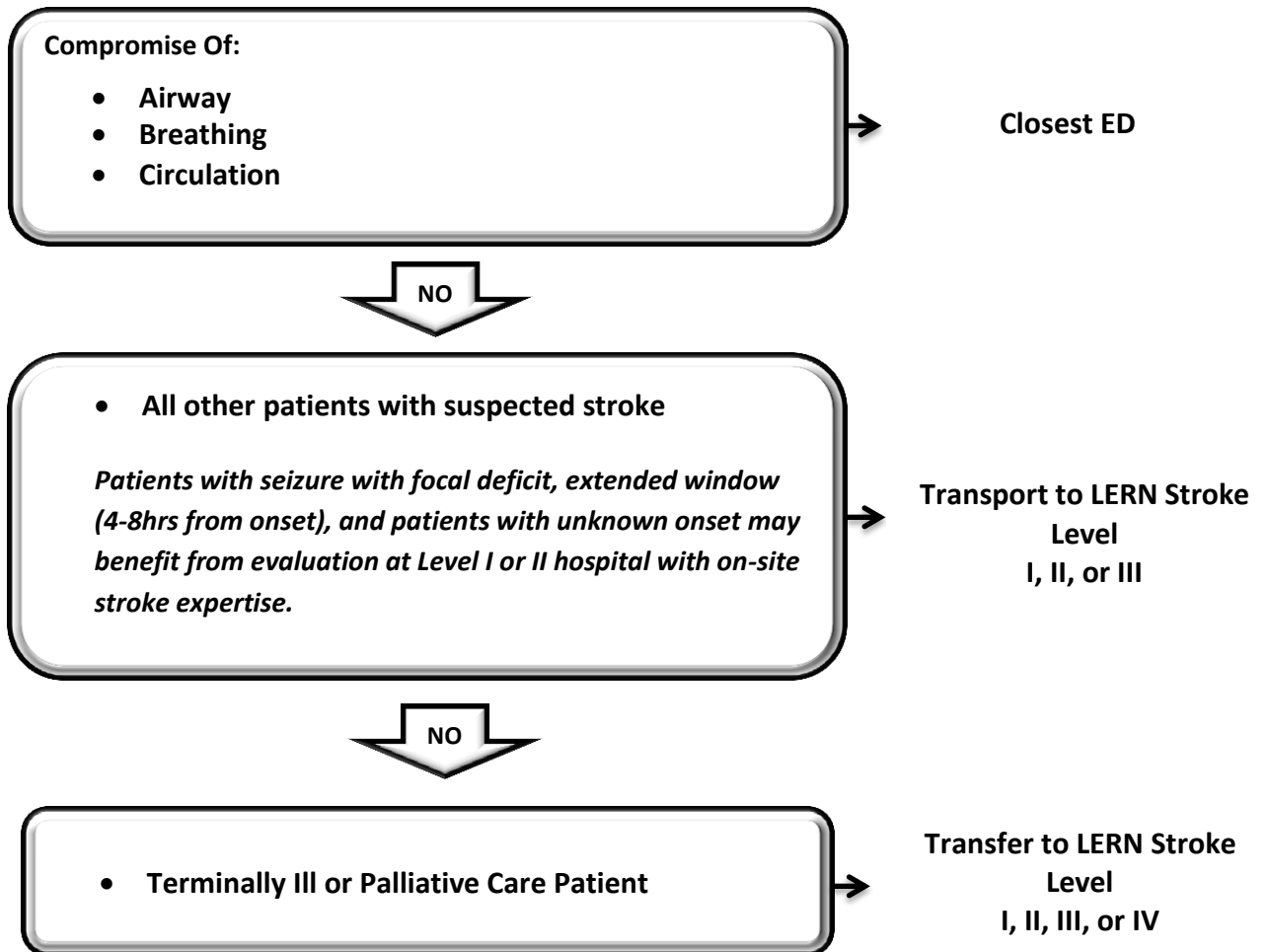


The following protocol applies to patients with suspected stroke:



Guiding Principles:

- Time is the critical variable in acute stroke care
- Protocols that include pre-hospital notification while en route by EMS should be used for patients with suspected acute stroke to facilitate primary destination efficiency.
- Treatment with intravenous tPA is the only FDA approved acute therapy for stroke
- EMS should identify the geographically closest facility capable of providing tPA treatment.
- Transfer patient to the nearest hospital equipped to provide tPA treatment.
- Secondary transfer to facilities equipped to provide tertiary care and interventional treatments should not prevent administration of tPA to appropriate patients.