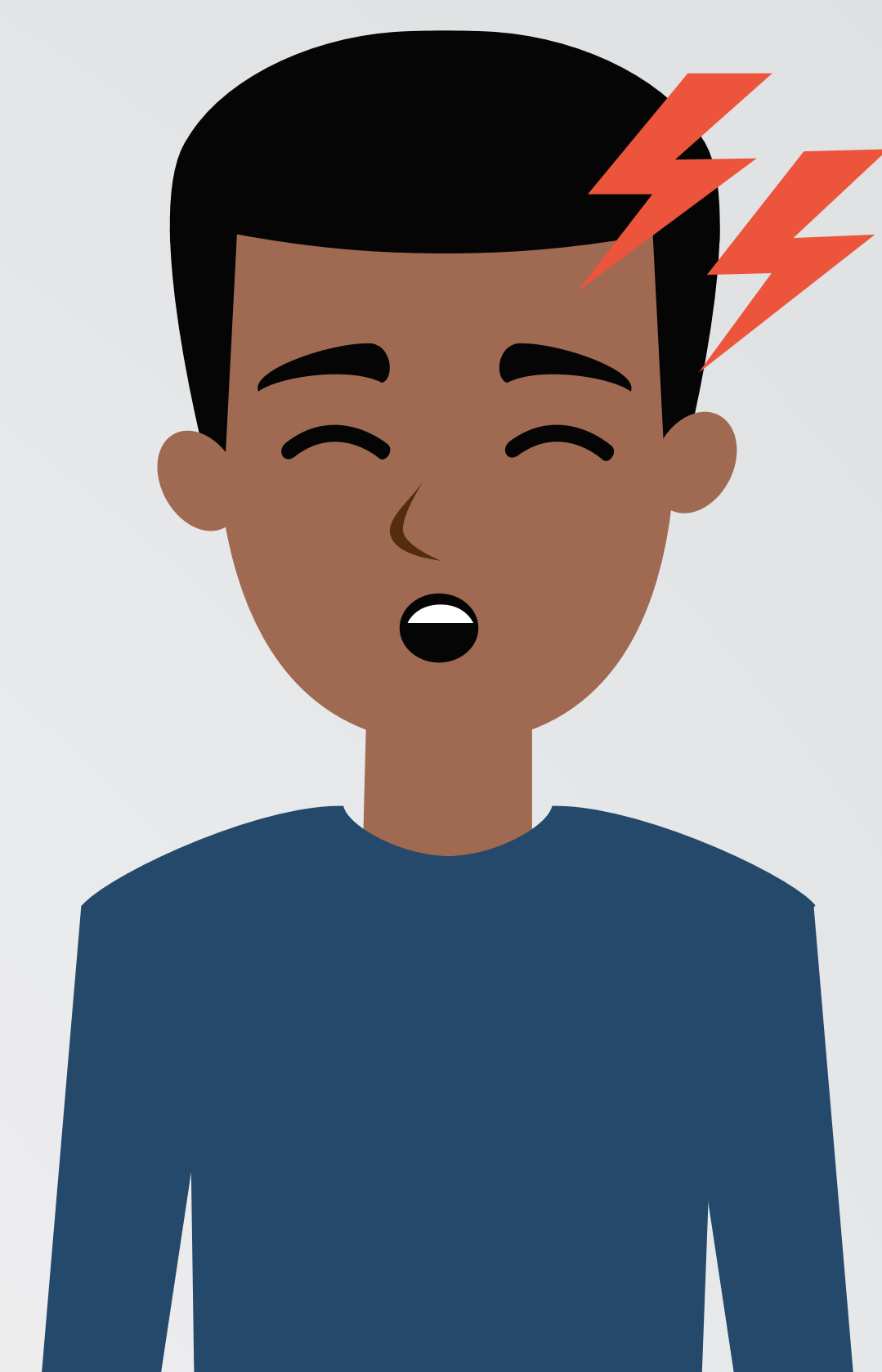
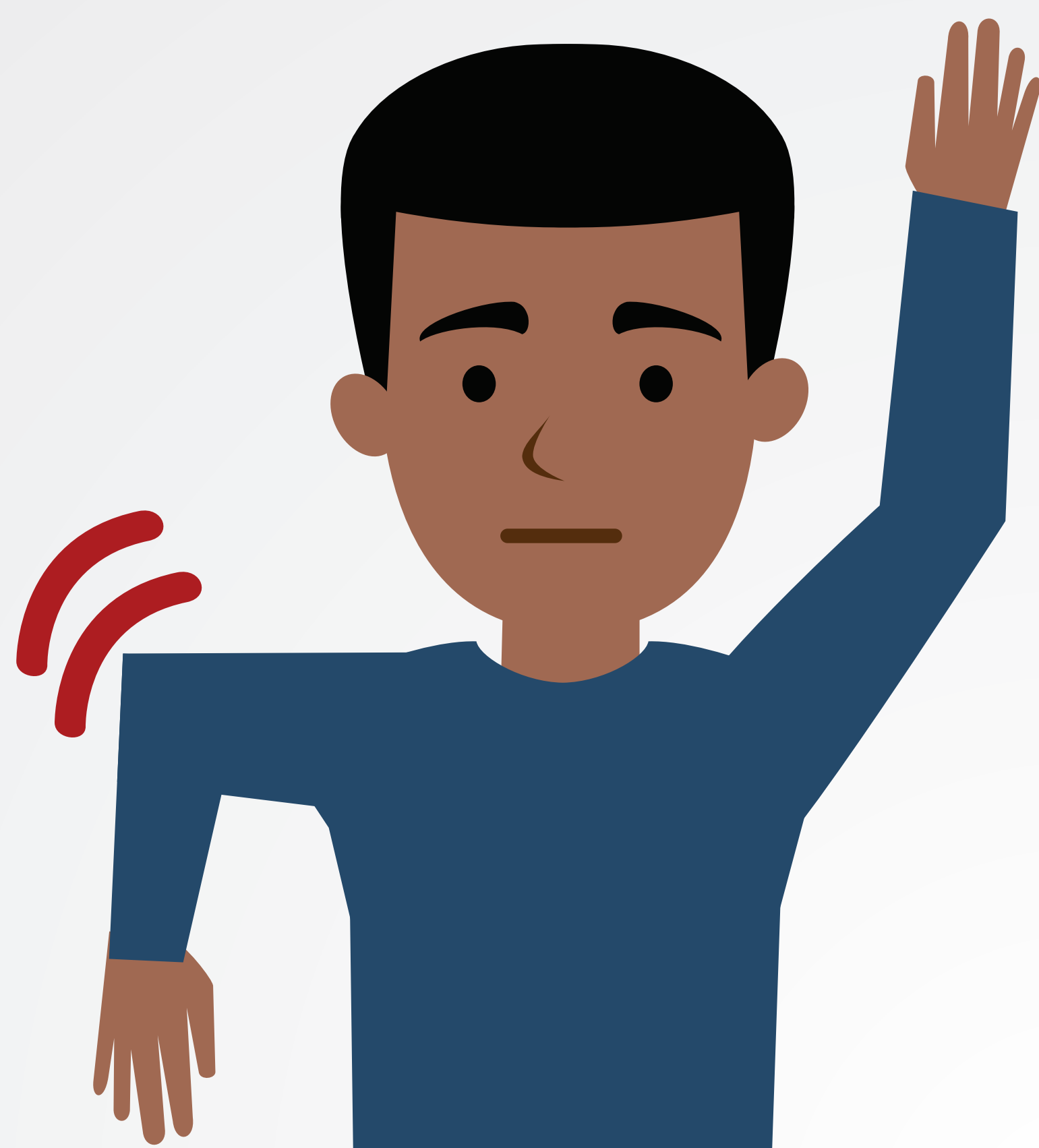


**FACE DROOPING**

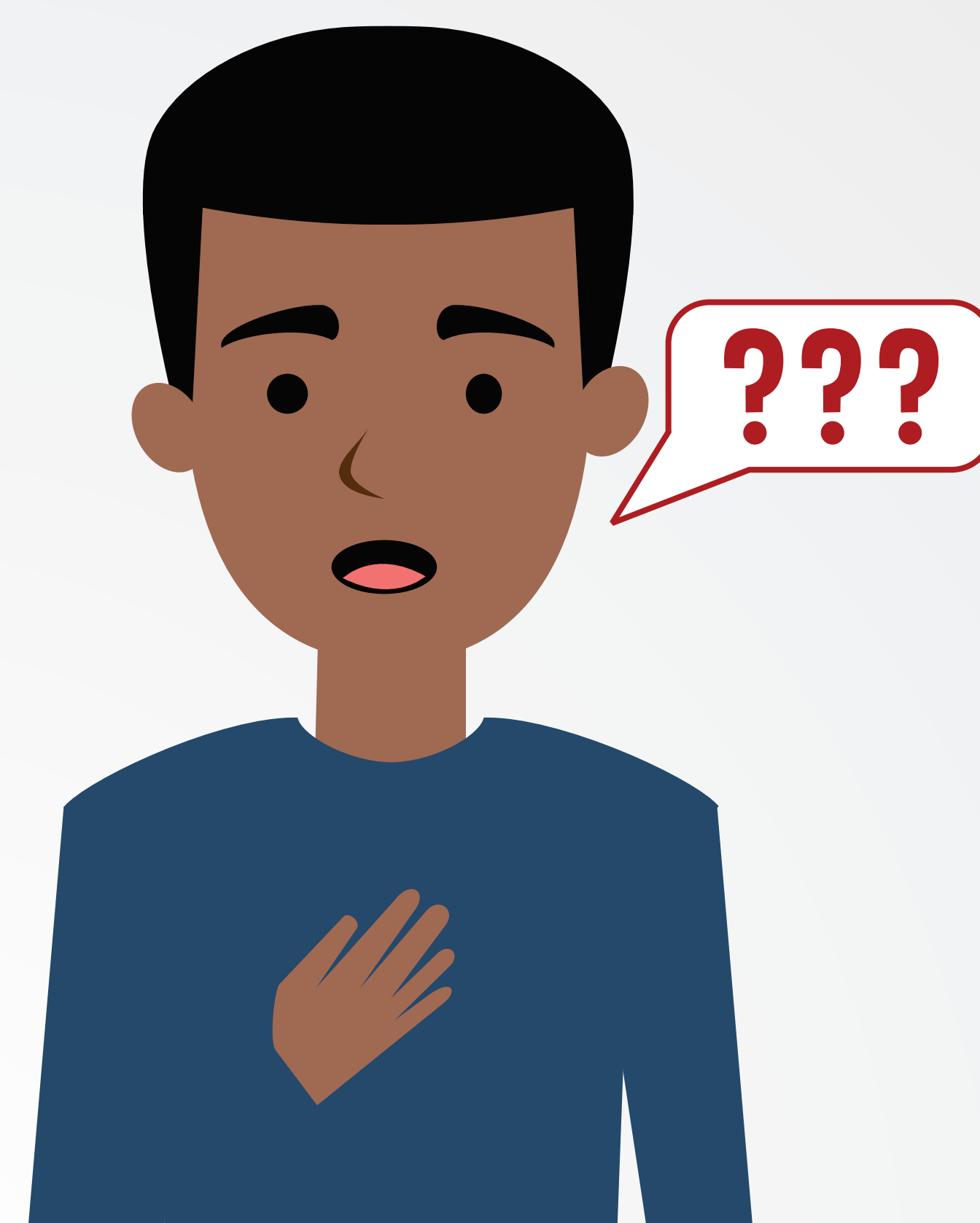
**IF YOU ARE HERE BECAUSE OF**



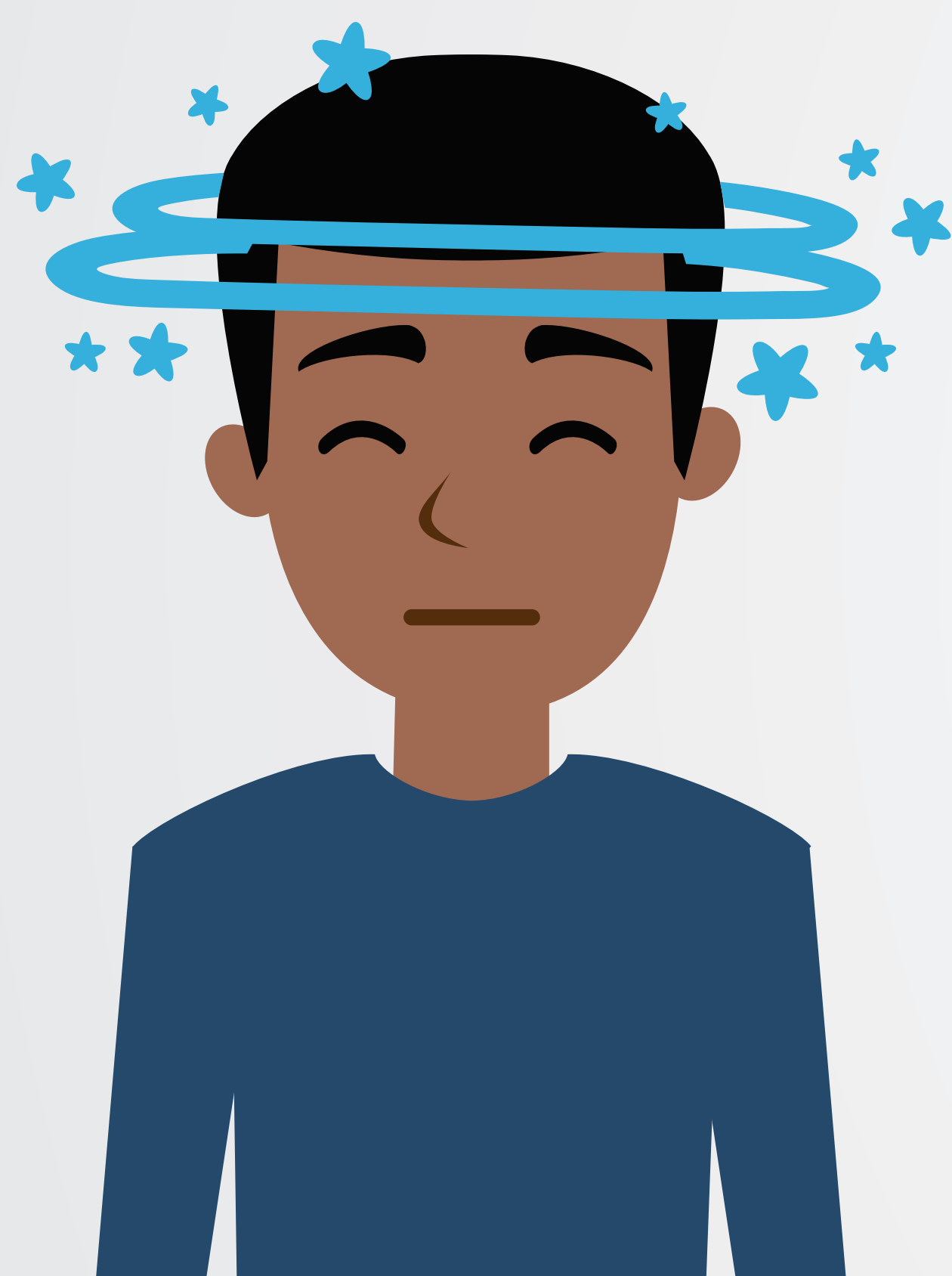
**SEVERE HEADACHE**



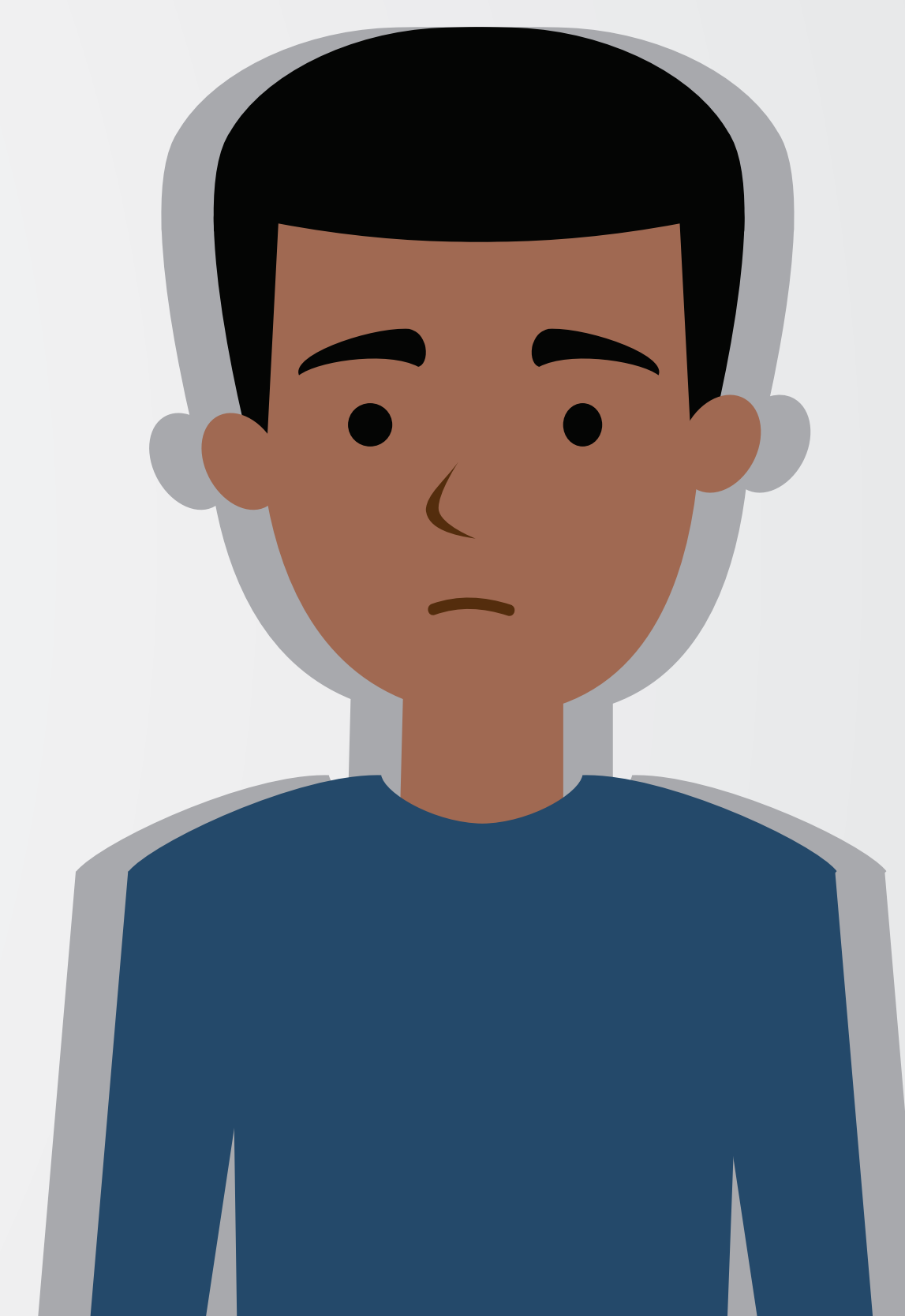
**ARM/LEG WEAKNESS**



**SPEECH DIFFICULTIES**



**UNEXPLAINED DIZZINESS**



**LOSS OF VISION OR DOUBLE VISION**

**PLEASE LET THE TRIAGE NURSE KNOW IF YOU HAVE DEVELOPED ONE OR MORE OF THESE SYMPTOMS SUDDENLY.**

**STROKE IS AN EMERGENCY!  
EVERY MINUTE MATTERS...**